



CALABLANCA

RESIDENCES

SITGES - BARCELONA

*A new way
of luxury living*



CALABLANCA
RESIDENCES

Welcome to Calablanca Residences

An exclusive collection of two residential buildings designed for comfort under Passivhouse standards and located in La Plana, one of the best residential areas in Sitges.

The complex will feature 29 residences and a commercial space on the ground floor of one of the buildings.

Most of the apartments exceed 100m² and offer open-plan interiors, with spacious terraces overlooking the Mediterranean.

A ground-floor pool surrounded by landscaped outdoor areas with low-maintenance plant species. A chill-out area on the rooftop of each building with Balinese beds and a water feature surrounded by gardens designed for visual enjoyment and relaxation for the residents.

Calablanca Residences is situated in a privileged location, surrounded by international schools, sports facilities, and shopping areas, very close to the sea and the center of a town with a special charm.

Calablanca Residences is a development by AX Partners Private Equity Real Estate. A private oasis ten minutes from the beach, twenty minutes from El Prat airport, and half an hour from the center of Barcelona.

In short, a new way of living in an apartment without compromising on luxury.

Bienvenidos a Calablanca Residences

Una colección exclusiva de dos edificios residenciales, diseñadas para el confort bajo los estándares Passivhaus y situadas en La Plana, una de las mejores zonas de Sitges.

El complejo contará con 29 viviendas y un local comercial en la planta baja de uno de los edificios.

Pisos en su mayoría de más de 100m² y espacios interiores diáfanos, con amplias terrazas con vistas al Mediterráneo.

Una piscina en la planta baja rodeada de zonas exteriores ajardinadas con especies especialmente escogidas por su bajo mantenimiento. Un Chill out en la cubierta de cada uno de los edificios con zona de camas balinesas y una lámina de agua rodeada de jardines diseñados para el disfrute visual y el relax de los residentes.

Calablanca Residences se encuentra en una zona privilegiada, rodeada de colegios internacionales, equipamientos deportivos y zonas comerciales, muy cerca del mar y el centro de un pueblo con un encanto especial.

Calablanca Residences es una promoción de AX Partners Private Equity Real Estate. Un oasis privado a diez minutos de la playa, veinte minutos del Aeropuerto del Prat y a media hora del centro de Barcelona.

En definitiva, una nueva forma de vivir en un piso sin renunciar al lujo.





“Home is not a place, it is a feeling.”
And that sensation: the perfect mix between
comfort and well-being.

“Hogar no es un lugar, es una sensación”.
Y esa sensación: la mezcla perfecta entre
confort y bienestar.

Vivir en una casa pasiva
según los estándares
Passivhaus

Vivir en una casa pasiva
significa vivir en una vivienda
con un consumo energético
casi nulo junto a un elevado
grado de confort y bienestar
interior.

El estándar Passivhaus incluye
un excelente aislamiento
térmico que mantiene la
temperatura interior siempre
perfecta, utiliza ventanas de
altas prestaciones que aíslan
del ruido y controlan la
radiación, cuentan con
ventilación mecánica con
recuperador de calor que
garantiza una calidad del aire
y un control adecuado de la
humedad.

Son viviendas que por su
diseño aprovechan al máximo
la iluminación natural y que
llegan a ahorrar hasta un 75%
las necesidades de
calefacción y refrigeración
respecto a una vivienda
convencional.

Requieren mínima energía
suplementaria que se puede
cubrir con facilidad a partir de
energías renovables, siendo
una construcción con un
coste energético muy bajo.

Vivir en una vivienda de
consumo casi nulo nos ofrece
un elevado confort interior,
junto a grandes ventajas
económicas.

Living in a Passive House According to Passivhaus Standards


Living in a passive house means residing in a home with almost zero energy consumption along with a high degree of comfort and indoor well-being.

The Passivhaus standard includes excellent thermal insulation that keeps the indoor temperature always perfect, uses high-performance windows that insulate from noise and control radiation, and features mechanical ventilation with heat recovery to ensure air quality and proper humidity control.

These homes are designed to maximize natural lighting and can save up to 75% on heating and cooling needs compared to a conventional home.

They require minimal supplemental energy, which can easily be covered by renewable energy sources, making them extremely energy-efficient.

Living in an almost zero-energy home offers high interior comfort along with significant economic benefits.



The residential complex, promoted by **AX Partners Private Equity Real Estate** and designed by **Sgarq Passivhaus Architecture**, is composed of two identical buildings, Block A and Block B. These buildings feature perfectly insulated facades with large windows and extensive overhangs that alternate textures of stone and wood.

El complejo residencial promovido por **AX Partners Private Equity Real Estate** y diseñado por **Sgarq Passivhaus Architecture** está compuesto por dos edificios idénticos, el Bloque A y el Bloque B. Cuentan con fachadas perfectamente aisladas con grandes ventanales y extensos voladizos que alternan texturas de piedra y madera.

The outdoor pool, fully integrated into a natural environment, is surrounded by a designer garden in symbiosis with the building. Specially cultivated species for this project create pathways with native plants that connect and purify the surroundings.

La piscina exterior, totalmente integrada en un ambiente natural está rodeada de un jardín de diseño en simbiosis con la edificación. Con especies cultivadas especialmente para este proyecto se crean itinerarios con plantas nativas que conectan y depuran el ambiente.

Community garden





Swimming pool

The rooftop chill-out area is a space designed for enjoyment, offering a sensory experience that enhances sight, smell, touch, taste, and hearing. Grasses that sway in the breeze, lavender that fills the air, and olive trees create an authentic Mediterranean atmosphere with the best views of the town and the sea.

El Chill out en cubierta es un espacio que invita a disfrutar, una experiencia sensorial que potencia la vista, olfato, tacto, gusto y oído, gramíneas que dan movimiento, lavandas que inundan el ambiente, olivos, auténtico mediterráneo con las mejores vistas al pueblo y al mar.



An elegant, spacious, and luminous entrance hall has been designed to invite you into the staircase and elevator area. The play of textures with mirrors, white elements, wood, controlled lighting, and signage showcases a building carefully designed at all levels.

Un elegante hall de acceso, amplio y luminoso se ha diseñado para invitar a entrar a la zona de escaleras y el ascensor. El juego de texturas con espejos, el blanco, la madera, la iluminación controlada y la señalética, muestran un edificio cuidadosamente diseñado en todos los niveles.



On the basement floor of the complex, there is a parking area that optimizes the use of spaces and common facilities. It offers extra-wide, double, and single parking spaces, each with its own storage room. There is a main access that is comfortable and safe for everyone, as well as a secondary or emergency exit leading to the open area of the communal pool.

En la planta sótano del complejo encontramos un parking que optimiza al máximo el uso de los espacios e instalaciones comunes. Ofrece plazas extra anchas, dobles, sencillas, con trasteros para cada una. Un acceso principal cómodo y seguro para todos y un acceso secundario o salida de emergencia hacia el espacio abierto de la piscina comunitaria.

Parking





Residences range from 1 to 4 bedrooms, with different layout options to suit the needs of each resident.

A central core surrounded by wooden slats, highlighted with lighting, becomes the focal point from which all spaces are distributed. This central element is the common design feature that distinguishes these homes.

Viviendas de 1 a 4 dormitorios, con diferentes opciones de distribución según las necesidades de cada residente. Un núcleo central rodeado de lamas de madera acentuado con iluminación, protagonista y centro de atención desde donde se distribuyen todos los espacios se convierte en el elemento de diseño común que las distingue.

Kitchen - dining room



Indoor Temperature

25°

8:30 am	Sunny
69%	Normal humidity
400 ppm	Clean air
42 dB	Quiet
Feeling	Comfortable

Comfortable

Outdoor Temperature

28°

8:30 am	Sunny
95%	High humidity
403 ppm	Clean air
48 dB	Quiet
Feeling	Warm

Warm

Lounge

All residences feature an open-plan kitchen and dining area that flows into the living room and extends to the large terraces or balconies. Natural light, incredible views, well-being, and comfort are guaranteed, all with the luxury of a designer apartment.

Todas las viviendas cuentan con una cocina-comedor abierta al salón y a las grandes terrazas exteriores. Luz natural, vistas increíbles, bienestar y confort garantizado con el lujo de un piso de diseño.



Outdoor Temperature
32°

10:00 am Sunny
90% High humidity
403 ppm Clean air
50 dB Normal
Feeling Hot

Warm

Indoor Temperature
25°

10:00 am Sunny
65% Normal humidity
400 ppm Clean air
42 dB Quiet
Feeling Comfortable

Comfortable



All bedrooms are exterior-facing, offering great luminosity and custom-designed storage spaces. The interior comfort temperature and air filtration systems ensure a deep rest and a completely refreshed awakening every morning.

Todas las habitaciones son exteriores, con gran luminosidad y con espacios de almacenaje diseñados a medida. La temperatura de confort interior y el sistema de filtrado del aire, garantizan un descanso profundo y despertar cada mañana completamente renovado.

Indoor Temperature

25°

9:15 am Sunny
68% Normal humidity
400 ppm Clean air
42 dB Quiet
Feeling Comfortable

Comfortable

Outdoor Temperature

30°

9:15 am Sunny
95% High humidity
403 ppm Clean air
48 dB Quiet
Feeling Warm

Warm



Terrace

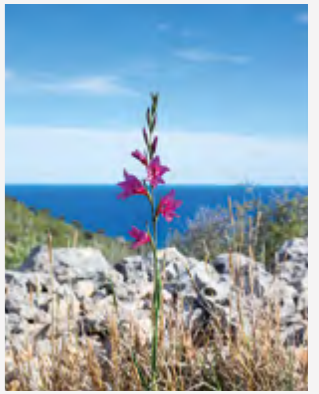
The large balconies create independent relaxation areas for each residence. In the garden, tall columnar cypresses filter and ensure the privacy of the lower residences. A luxury residential complex designed with each resident in mind.

Los grandes balcones crean áreas de descanso independientes para cada una de las viviendas, desde el jardín grandes cipreses columnares tamizan y garantizan la privacidad de las viviendas más bajas. Un complejo residencial de lujo pensado para cada uno de sus residentes.

Enjoying a sunset on a rooftop surrounded by lavender and olive trees, having a dedicated relaxation area for yoga, or simply accessing this space for a moment of peace in the middle of a workday will contribute to a healthy and balanced experience for residents. This provides a touch of freshness and a connection to Mediterranean nature.

Disfrutar de un atardecer en una cubierta rodeado de lavandas y olivos. Una zona de relajación para practicar yoga o simplemente para un momento de descanso en medio de un día de trabajo. Acceder a este espacio contribuirá a una experiencia saludable y equilibrada para sus residentes. Añadir un toque de frescura y un vínculo con la naturaleza mediterránea.





Sitges

The coastal town of Sitges, just 30 minutes from Barcelona, is an elegant and sophisticated maritime enclave that has become a landmark on the Mediterranean coast over the years.

Surrounded by vineyards and the mountains of Garraf Natural Park, it is known as the “Spanish Saint-Tropez”, due to its high-level nautical culture.

In addition to extraordinary beaches, there are exclusive shops and boutiques along with luxury hotels and restaurants.

El soleado pueblecito costero de Sitges, a sólo 30 minutos de Barcelona, es un enclave marítimo elegante y sofisticado que con los años se ha convertido en un lugar de referencia de la costa mediterránea.

Rodeado de viñedos y de las montañas del parque natural del Garraf, se la conoce como el “Saint-Tropez español”, debido a su cultura náutica de alto nivel.

En el se encuentran, aparte de extraordinarias playas, tiendas y boutiques exclusivas junto con hoteles y restaurantes de lujo.

Puerto Deportivo de Aiguadolç

Playa de Sant Sebastià

Estación del tren

Plaza del Ayuntamiento

Iglesia de Sant Bartomeu i Santa Tecla

Club Náutico

Parc de Can Robert

Playa de Sitges



Paseo Marítimo

Parque de Terramar



TECHNICAL INFORMATION

GENERAL FLOOR PLANS

PLANTAS GENERALES

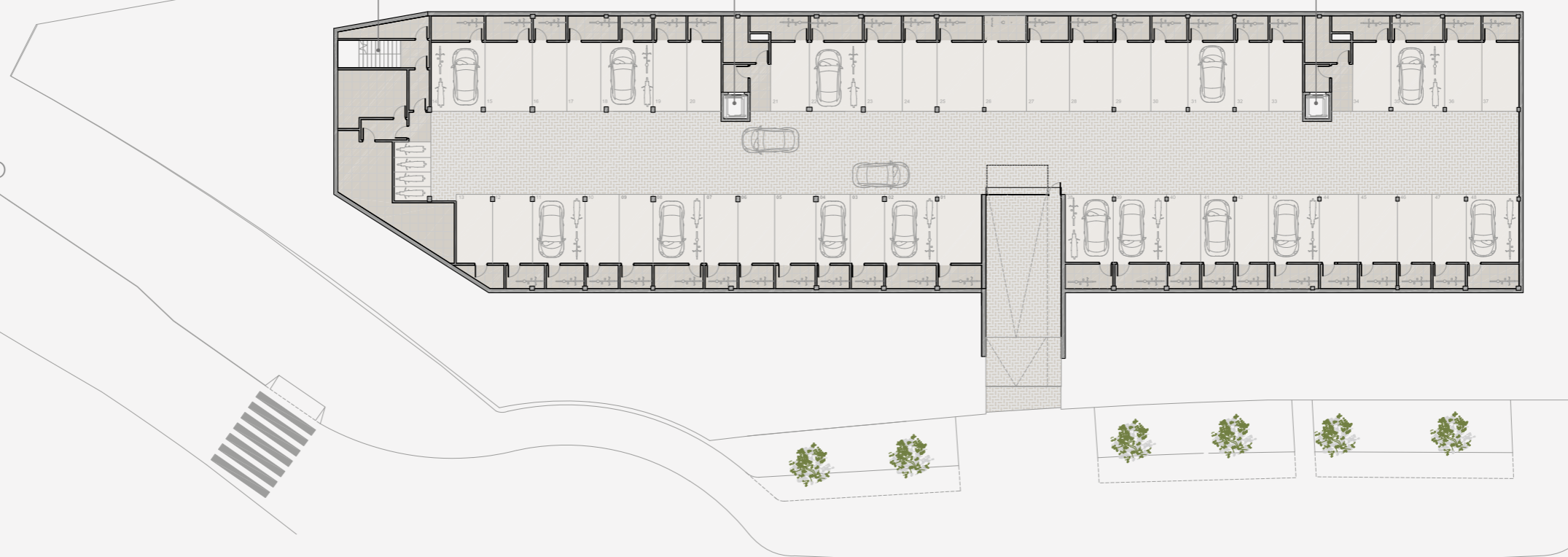
GROUND
PLANTA SÓTANO

EXTERIOR
STAIRCASE

LIFT
BLOCK A

LIFT
BLOCK B

PASEO DE LAS ACACIAS

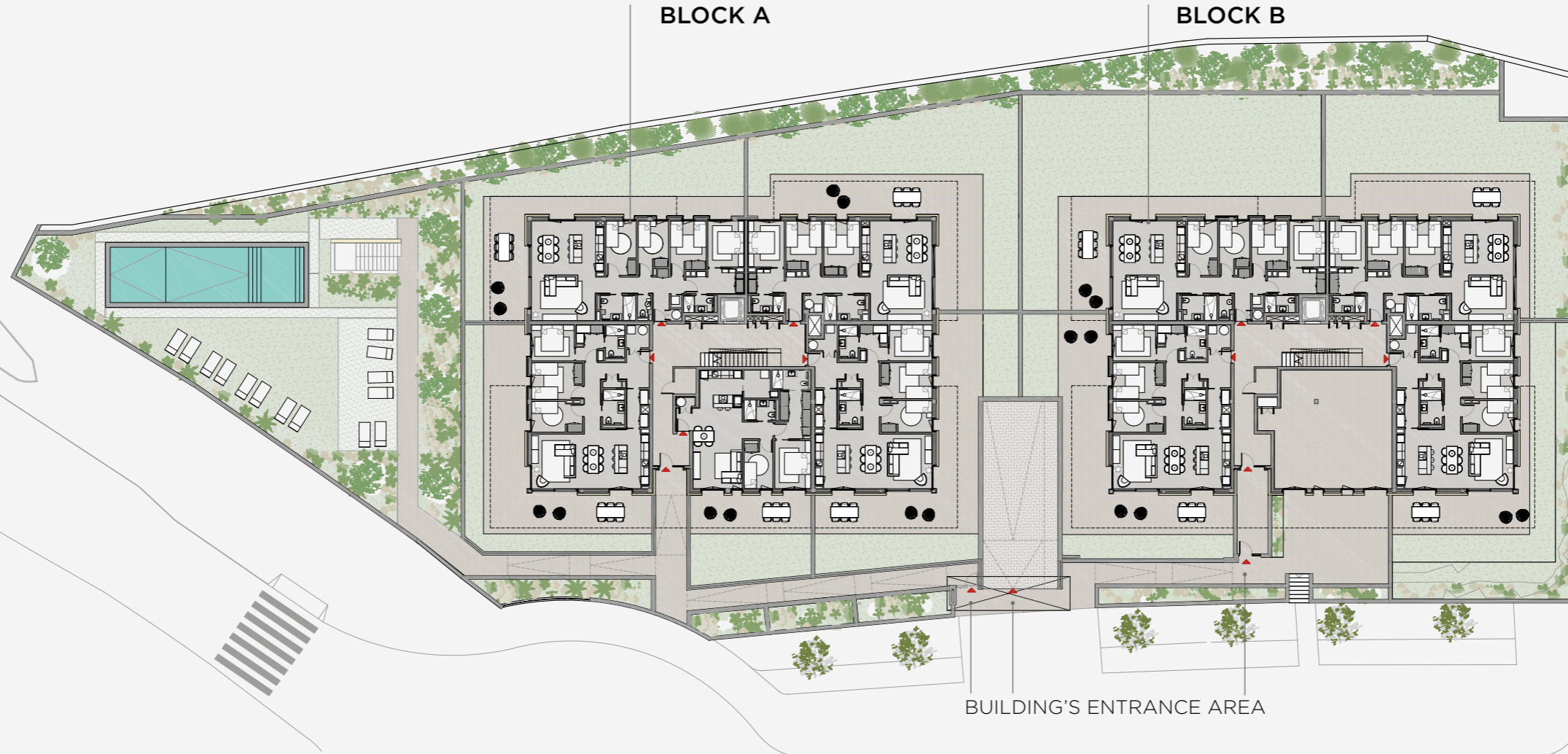


GROUND FLOOR
PLANTA BAJA

BLOCK A

BLOCK B

PASEO DE LAS ACACIAS



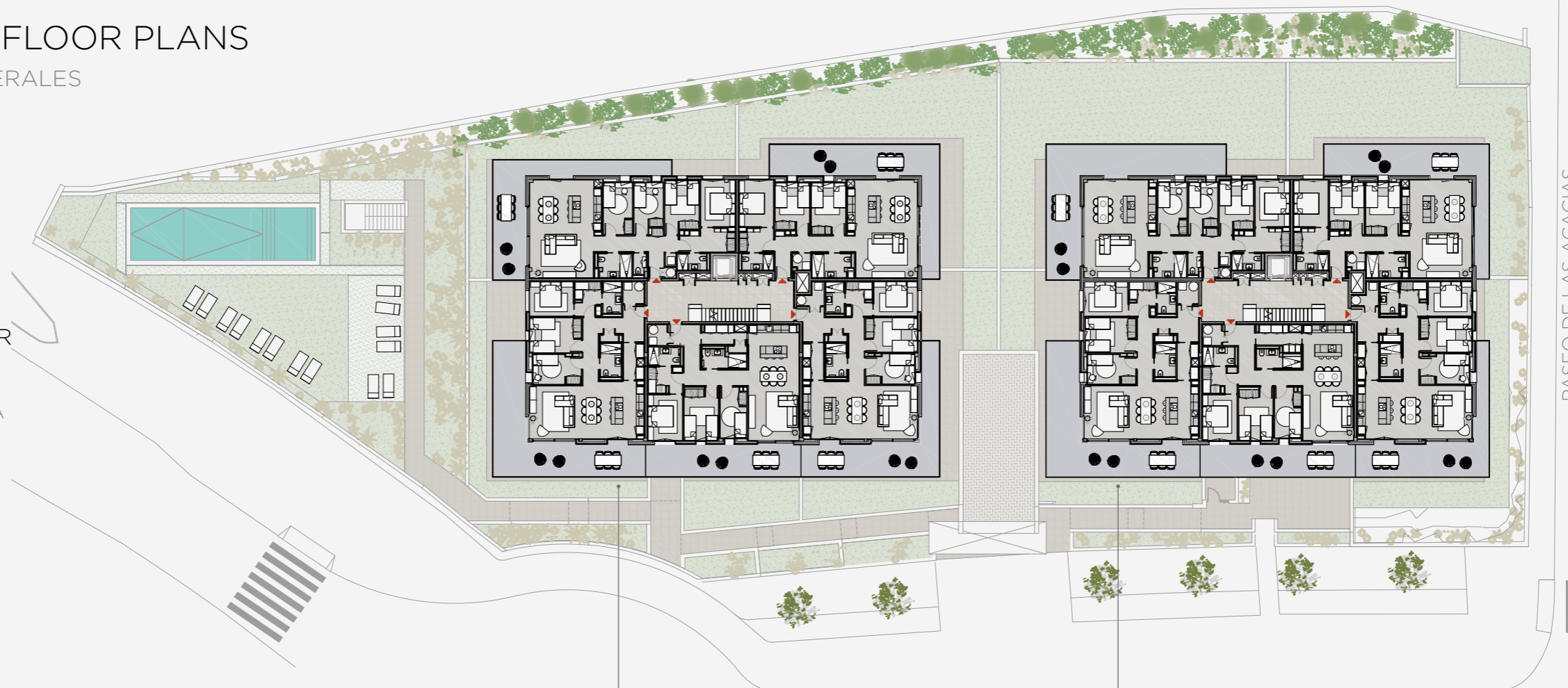
BUILDING'S ENTRANCE AREA

C/ FELIP FONT I FALP

GENERAL FLOOR PLANS

PLANTAS GENERALES

FIRST FLOOR
SECOND FLOOR
PLANTA PRIMERA
PLANTA SEGUNDA



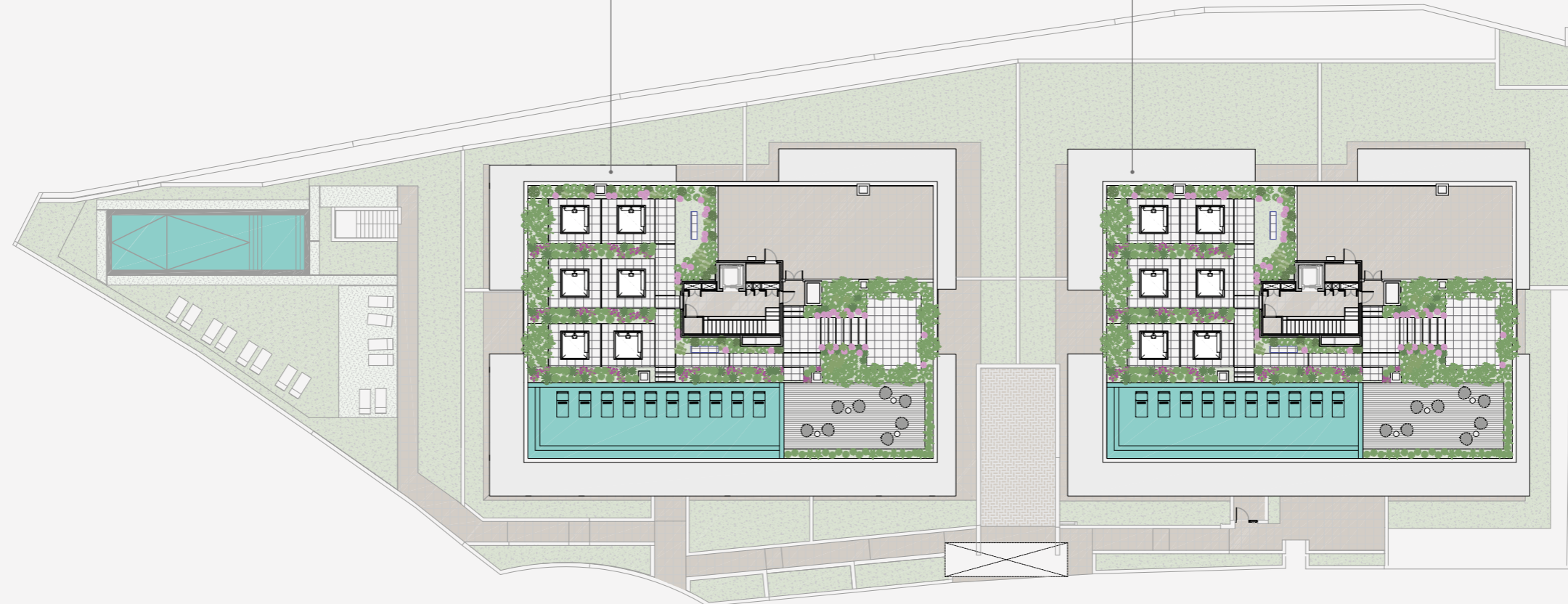
BLOCK A

BLOCK B

C/ FELIP FONT I FALP

PASEO DE LAS ACACIAS

ROOFTOP
PLANTA CUBIERTA



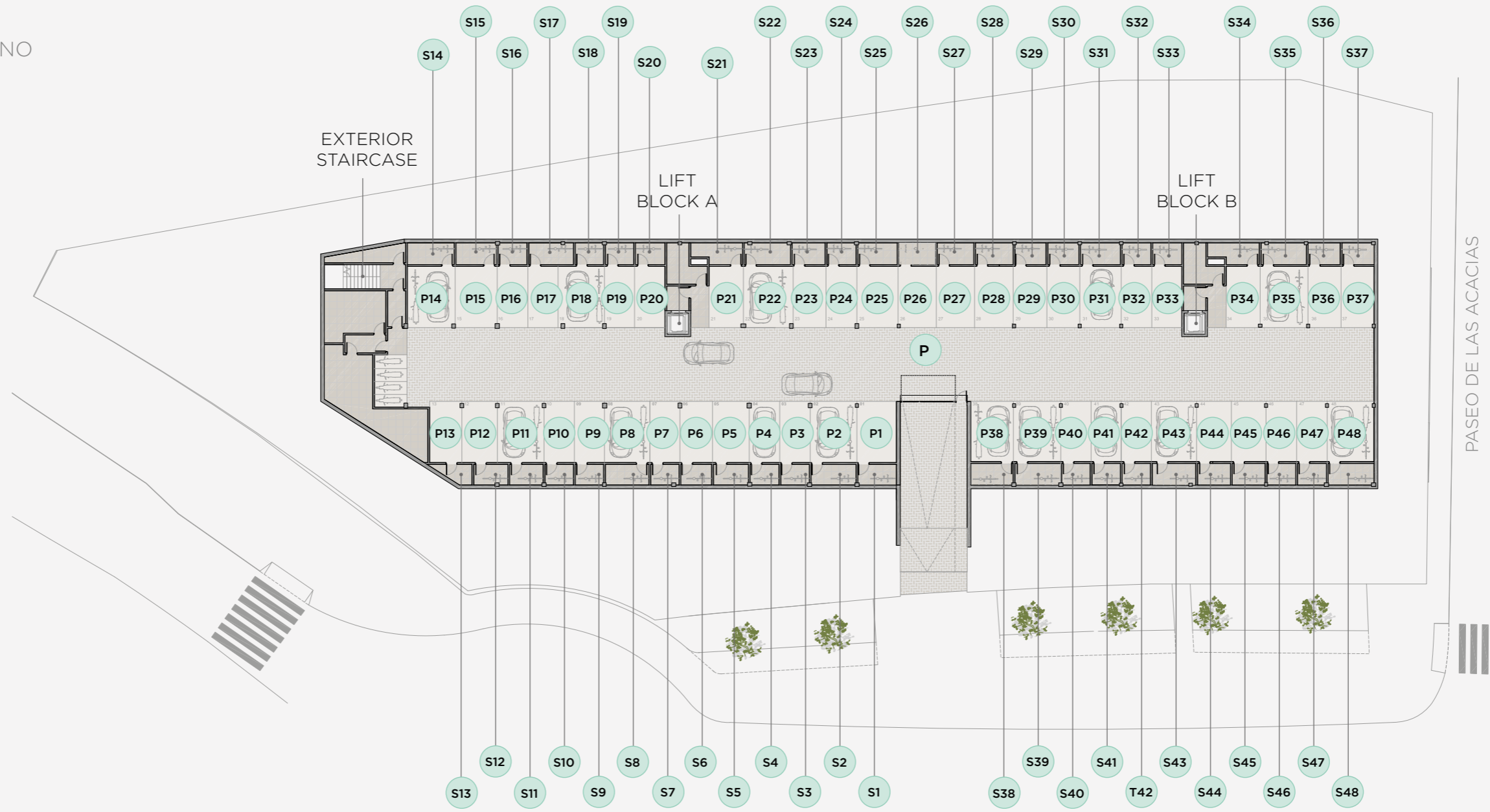
PASEO DE LAS ACACIAS

C/ FELIP FONT I FALP

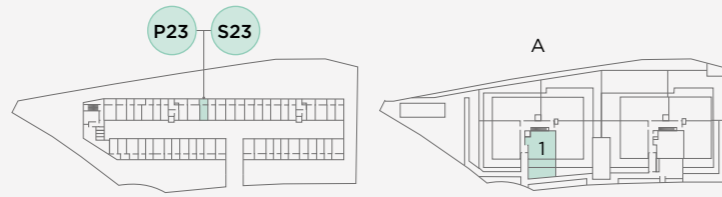
GENERAL FLOOR PLANS

PLANTAS GENERALES

GROUND
PLANTA SÓTANO



C/ FELIP FONT I FALP



BLOCK A

SPECIAL FEATURES

GROUND FLOOR 1

66.50 m ²	AREA
29.30 m ²	GARDEN
24.36 m ²	TERRACE
18.70 m ²	PARKING AND STORAGE SPACE
24.15 m ²	BEDROOMS AND DRESSING ROOMS
6.90 m ²	BATHROOMS
1	LIFT
1	COMMUNITY POOL
1	CHILL OUT ROOFTOP

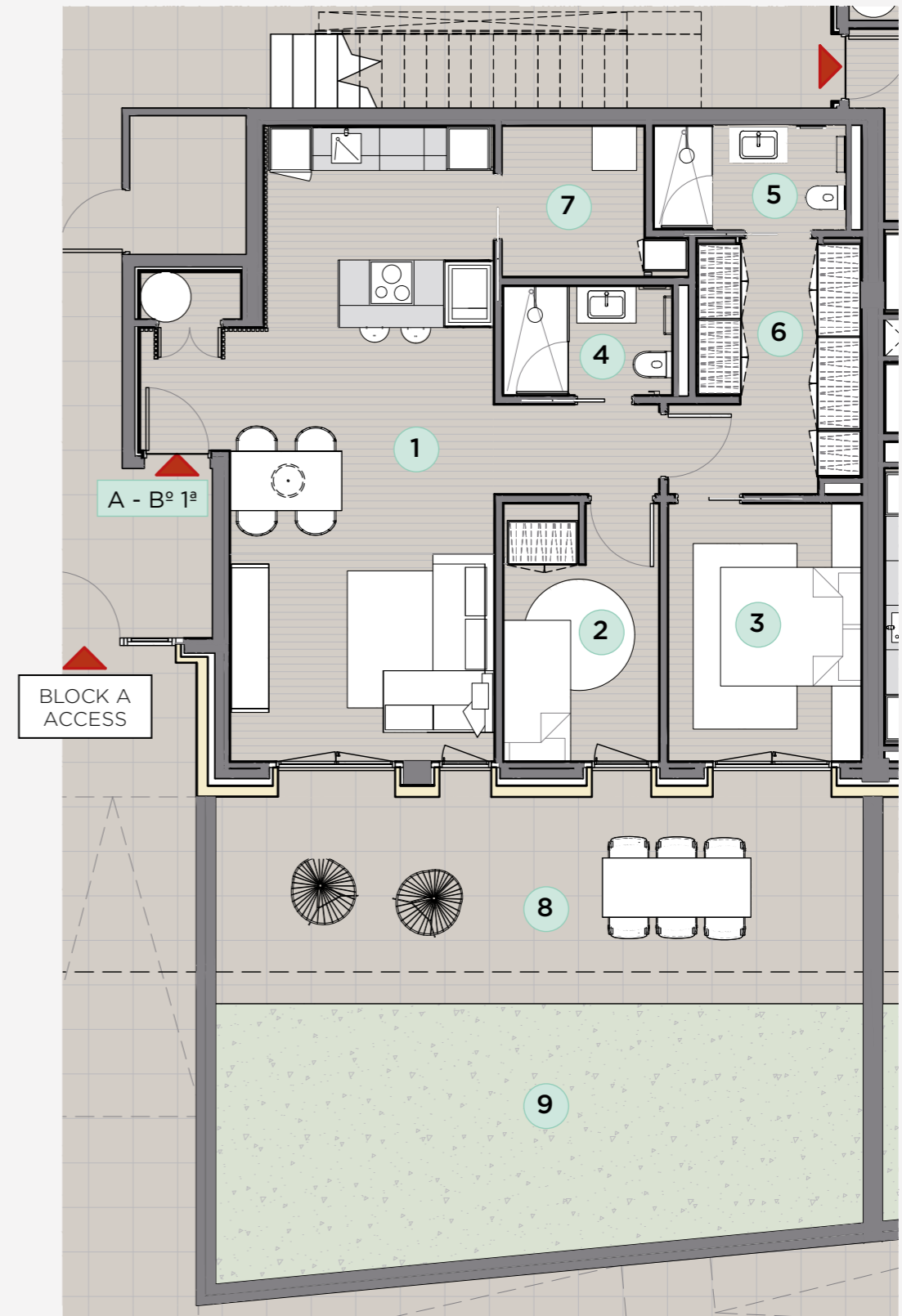
SURFACES

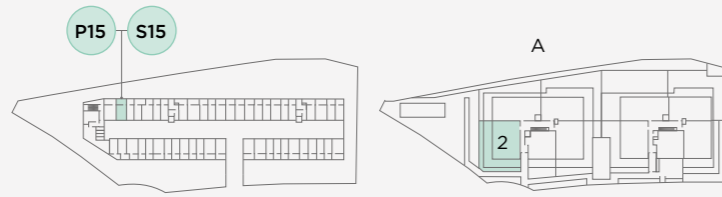
INDOOR

1	KITCHEN-DINING-LIVING ROOM	31.25 m ²
2	BEDROOM 1	7.20 m ²
3	BEDROOM 2	9.05 m ²
4	BATHROOM 1	3.35 m ²
5	BATHROOM 2	3.55 m ²
6	DRESSING ROOM 2	7.90 m ²
7	LAUNDRY	4.20 m ²

OUTDOOR

8	TERRACE	24.36 m ²
9	GARDEN	29.30 m ²





BLOCK A

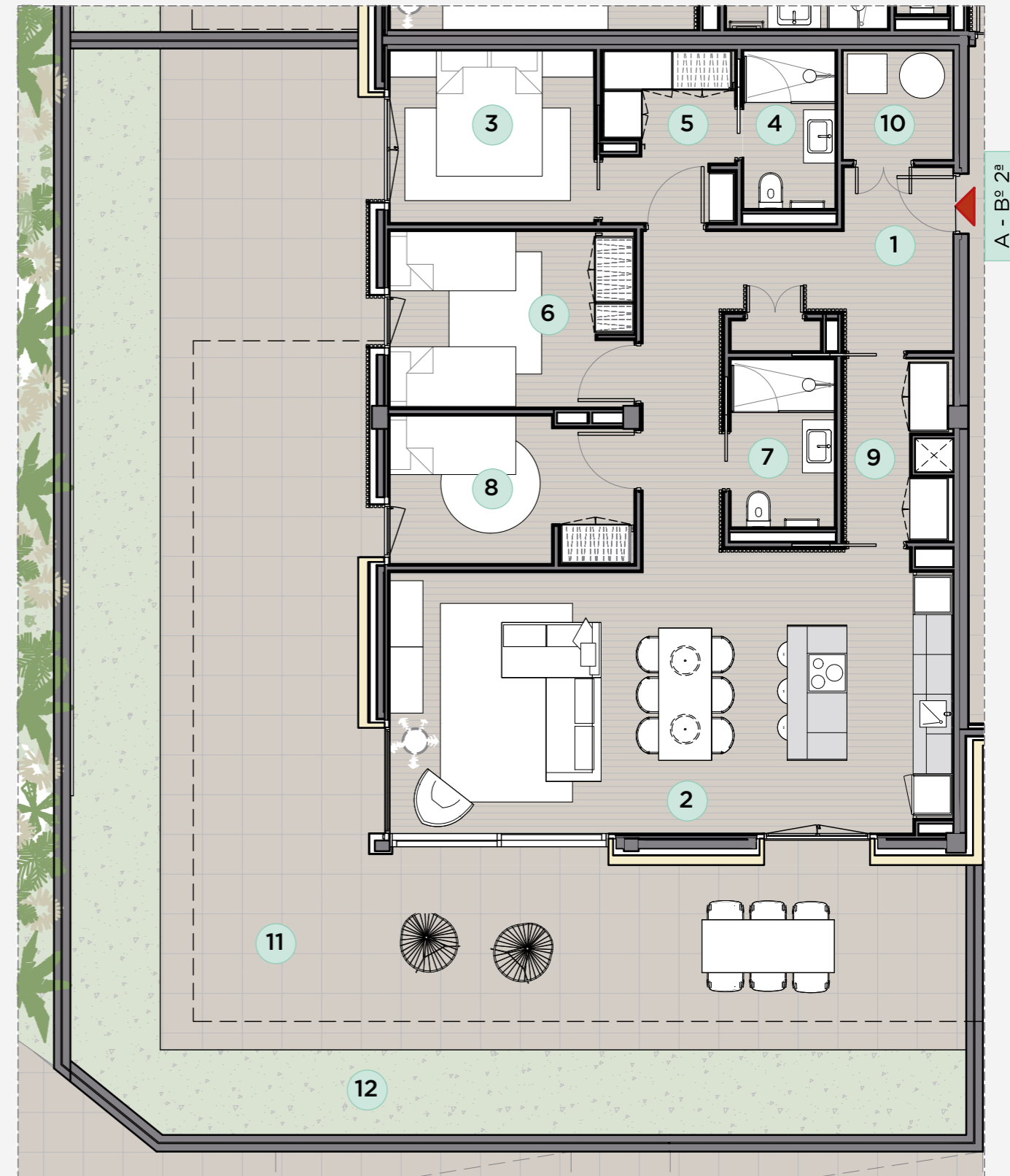
SPECIAL FEATURES

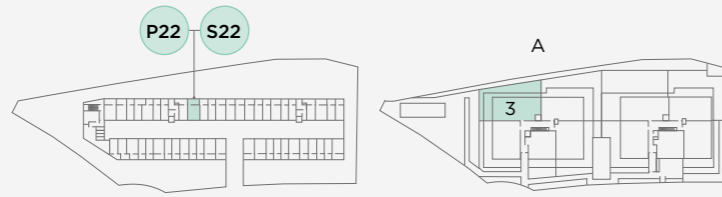
GROUND FLOOR 2

93.00 m ²	AREA
37.20 m ²	GARDEN
70.78 m ²	TERRACE
22.75 m ²	PARKING AND STORAGE SPACE
30.80 m ²	BEDROOMS AND DRESSING ROOMS
7.35 m ²	BATHROOMS
1	LIFT
1	COMMUNITY POOL
1	CHILL OUT ROOFTOP

SURFACES

INDOOR	
1	DISTRIBUTOR-ENTRANCE 13.85 m ²
2	KITCHEN-DINING-LIVING ROOM 34.10 m ²
3	BEDROOM 1 8.05 m ²
4	BATHROOM 2 3.35 m ²
5	DRESSING ROOM 1 5.00 m ²
6	BEDROOM 2 9.80 m ²
7	BATHROOM 1 4.00 m ²
8	BEDROOM 3 7.95 m ²
9	PANTRY 4.15 m ²
10	LAUNDRY 2.75 m ²
OUTDOOR	
11	TERRACE 70.78 m ²
12	GARDEN 37.20 m ²





BLOCK A

SPECIAL FEATURES

GROUND FLOOR 3

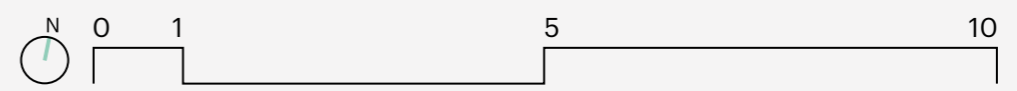
96.70 m ²	AREA
65.08 m ²	GARDEN
47.30 m ²	TERRACE
25.75 m ²	PARKING AND STORAGE SPACE
33.50 m ²	BEDROOMS AND DRESSING ROOMS
8.55 m ²	BATHROOMS
1	LIFT
1	COMMUNITY POOL
1	CHILL OUT ROOFTOP

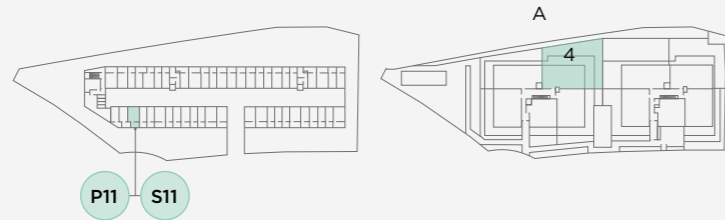
SURFACES

INDOOR	
1	DISTRIBUTOR-ENTRANCE 10.55 m ²
2	KITCHEN-DINING-LIVING ROOM 35.45 m ²
3	BEDROOM 1 8.60 m ²
4	BATHROOM 1 4.40 m ²
5	DRESSING ROOM 4 6.70 m ²
6	BEDROOM 2 7.90 m ²
7	BATHROOM 2 2.70 m ²
8	BEDROOM 3 9.50 m ²
9	BEDROOM 4 8.70 m ²
10	LAUNDRY 0.75 m ²
11	TOILET 1.45 m ²
OUTDOOR	
12	TERRACE 47.30 m ²
13	GARDEN 65.08 m ²



A - B^e 3^a





BLOCK A

SPECIAL FEATURES

GROUND FLOOR 4

86.65 m ²	AREA
112.00 m ²	GARDEN
71.15m ²	TERRACE
23.35 m ²	PARKING AND STORAGE SPACE
32.90 m ²	BEDROOMS AND DRESSING ROOMS
7.85 m ²	BATHROOMS
1	LIFT
1	COMMUNITY POOL
1	CHILL OUT ROOFTOP

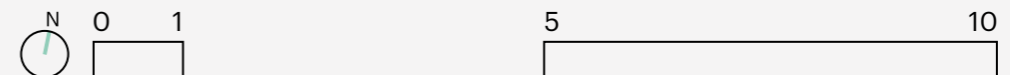
SURFACES

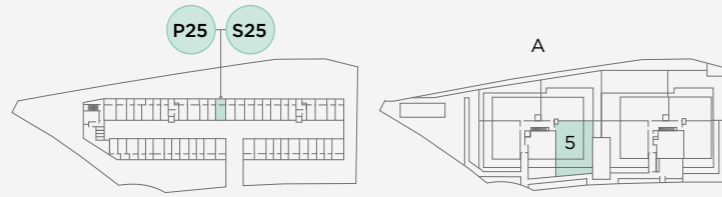
INDOOR

1 DISTRIBUTOR-ENTRANCE	9.95 m ²
2 KITCHEN-DINING-LIVING ROOM	34.40 m ²
3 BEDROOM 1	8.65 m ²
4 BATHROOM 2	2.90 m ²
5 DRESSING ROOM 1	4.55 m ²
6 BEDROOM 2	9.55 m ²
7 BATHROOM 1	4.95 m ²
8 BEDROOM 3	10.15 m ²
9 LAUNDRY	1.55 m ²

OUTDOOR

10 TERRACE	71.15 m ²
11 GARDEN	112.00 m ²





BLOCK A

SPECIAL FEATURES

GROUND FLOOR 5

92.70 m ²	AREA
41.50 m ²	GARDEN
70.43 m ²	TERRACE
22.20 m ²	PARKING AND STORAGE SPACE
30.70 m ²	BEDROOMS AND DRESSING ROOMS
7.25 m ²	BATHROOMS
1	LIFT
1	COMMUNITY POOL
1	CHILL OUT ROOFTOP

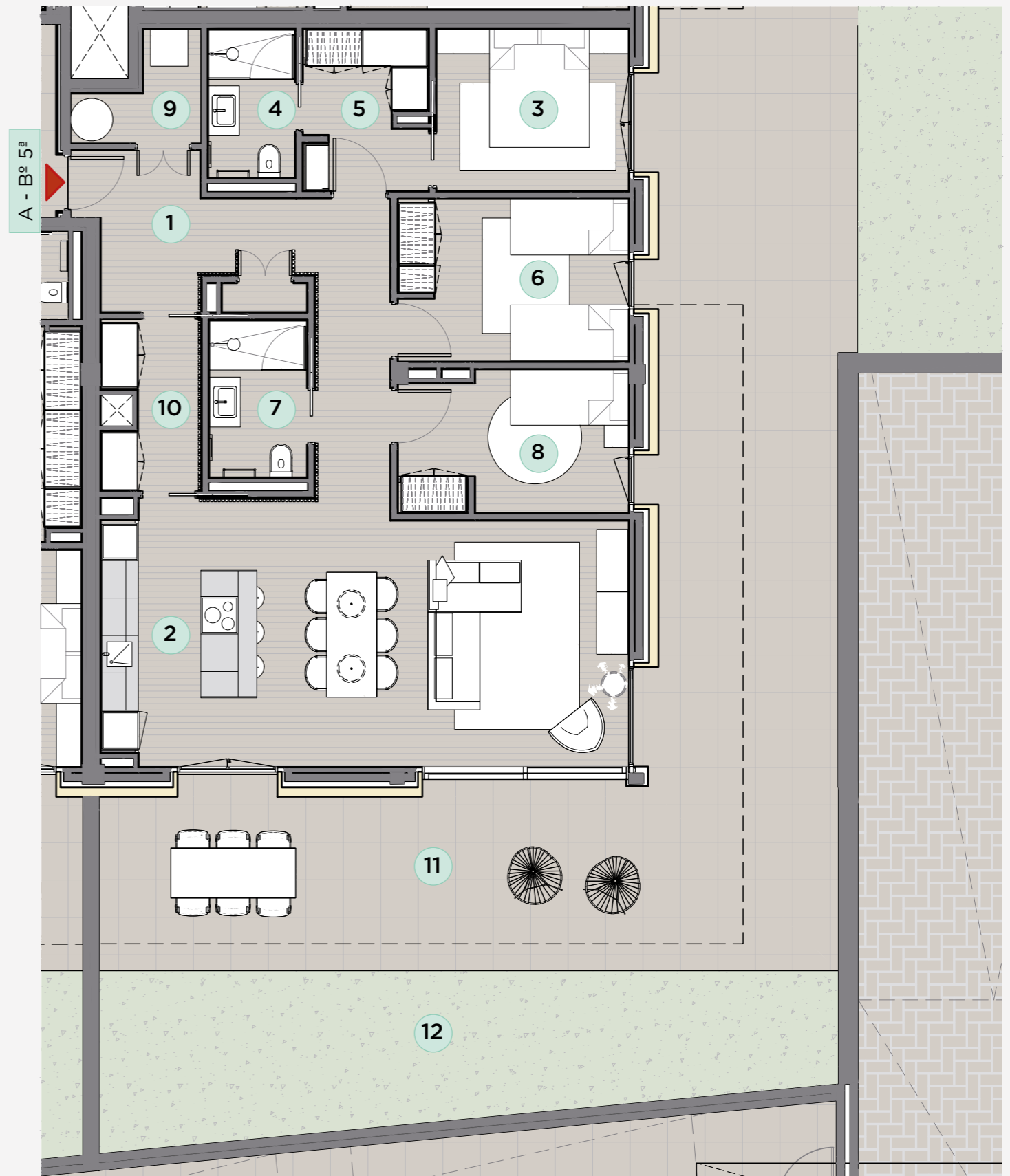
SURFACES

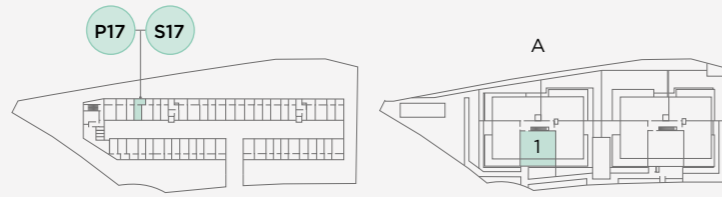
INDOOR

1	DISTRIBUTOR-ENTRANCE	13.90 m ²
2	KITCHEN-DINING-LIVING ROOM	34.15 m ²
3	BEDROOM 1	8.00 m ²
4	BATHROOM 2	3.30 m ²
5	DRESSING ROOM 1	5.00 m ²
6	BEDROOM 2	9.55 m ²
7	BATHROOM 1	3.95 m ²
8	BEDROOM 3	8.15 m ²
9	LAUNDRY	2.65 m ²
10	PANTRY	4.05 m ²

OUTDOOR

11	TERRACE	70.43 m ²
12	GARDEN	41.50 m ²





BLOCK A

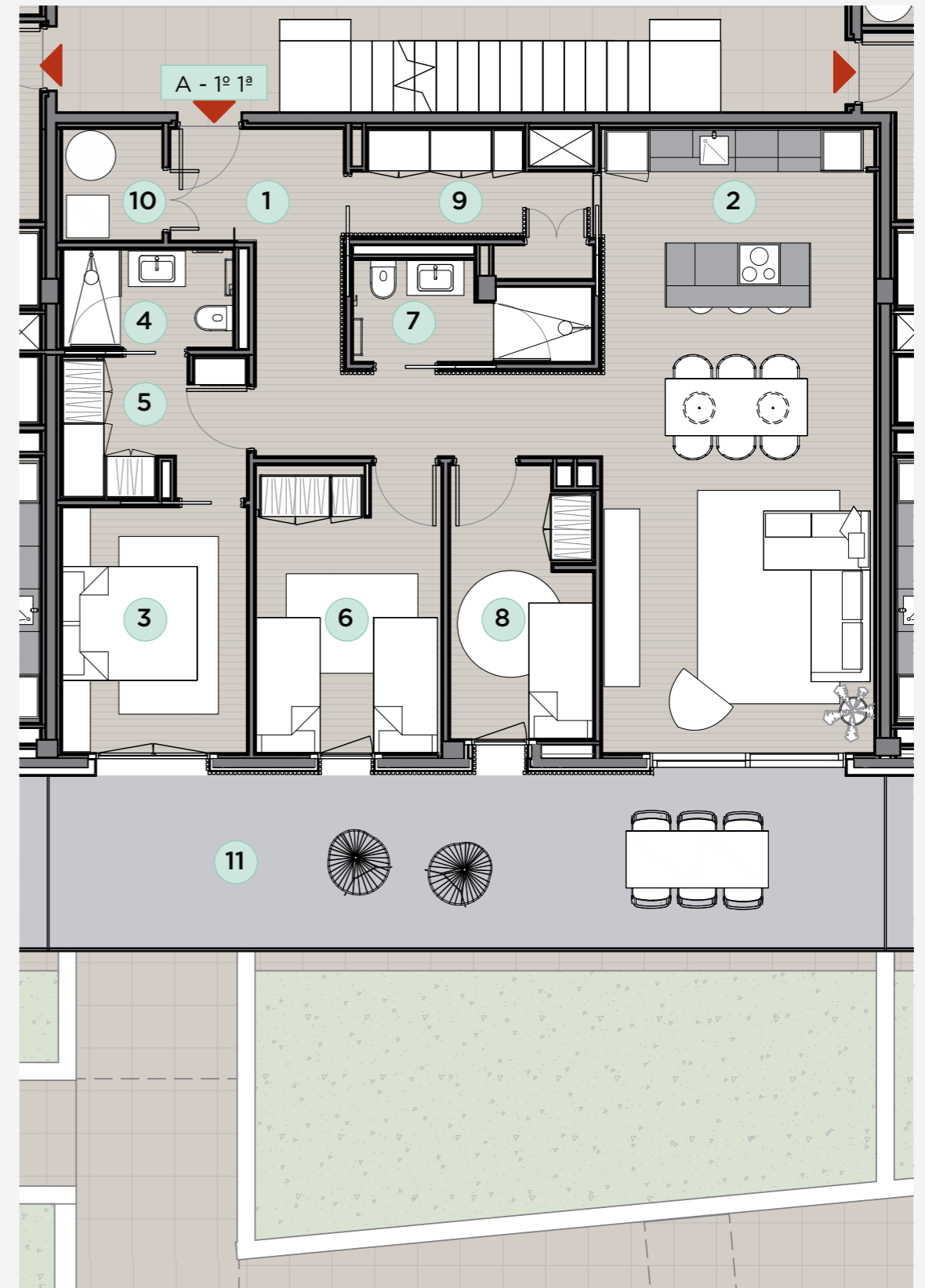
SPECIAL FEATURES

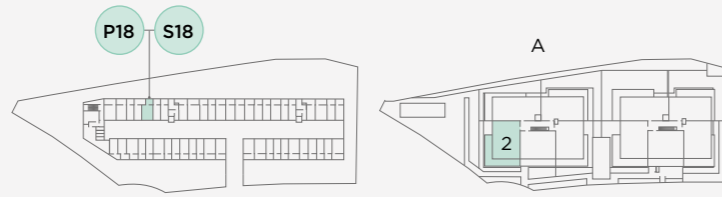
FIRST FLOOR 1

92.00 m ²	AREA
30.45 m ²	BALCONY
20.50 m ²	PARKING AND STORAGE SPACE
31.85 m ²	BEDROOMS AND DRESSING ROOMS
7.20 m ²	BATHROOMS
1	LIFT
1	COMMUNITY POOL
1	CHILL OUT ROOFTOP

SURFACES

INDOOR	
1 DISTRIBUTOR-ENTRANCE	11.90 m ²
2 KITCHEN-DINING-LIVING ROOM	33.60 m ²
3 BEDROOM 1	9.00 m ²
4 BATHROOM 2	3.30 m ²
5 DRESSING ROOM 1	4.95 m ²
6 BEDROOM 2	10.45 m ²
7 BATHROOM 1	3.90 m ²
8 BEDROOM 3	7.45 m ²
9 PANTRY	5.25 m ²
10 LAUNDRY	2.20 m ²
OUTDOOR	
11 BALCONY	30.45 m ²





BLOCK A

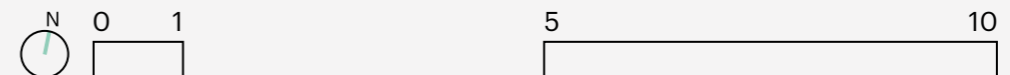
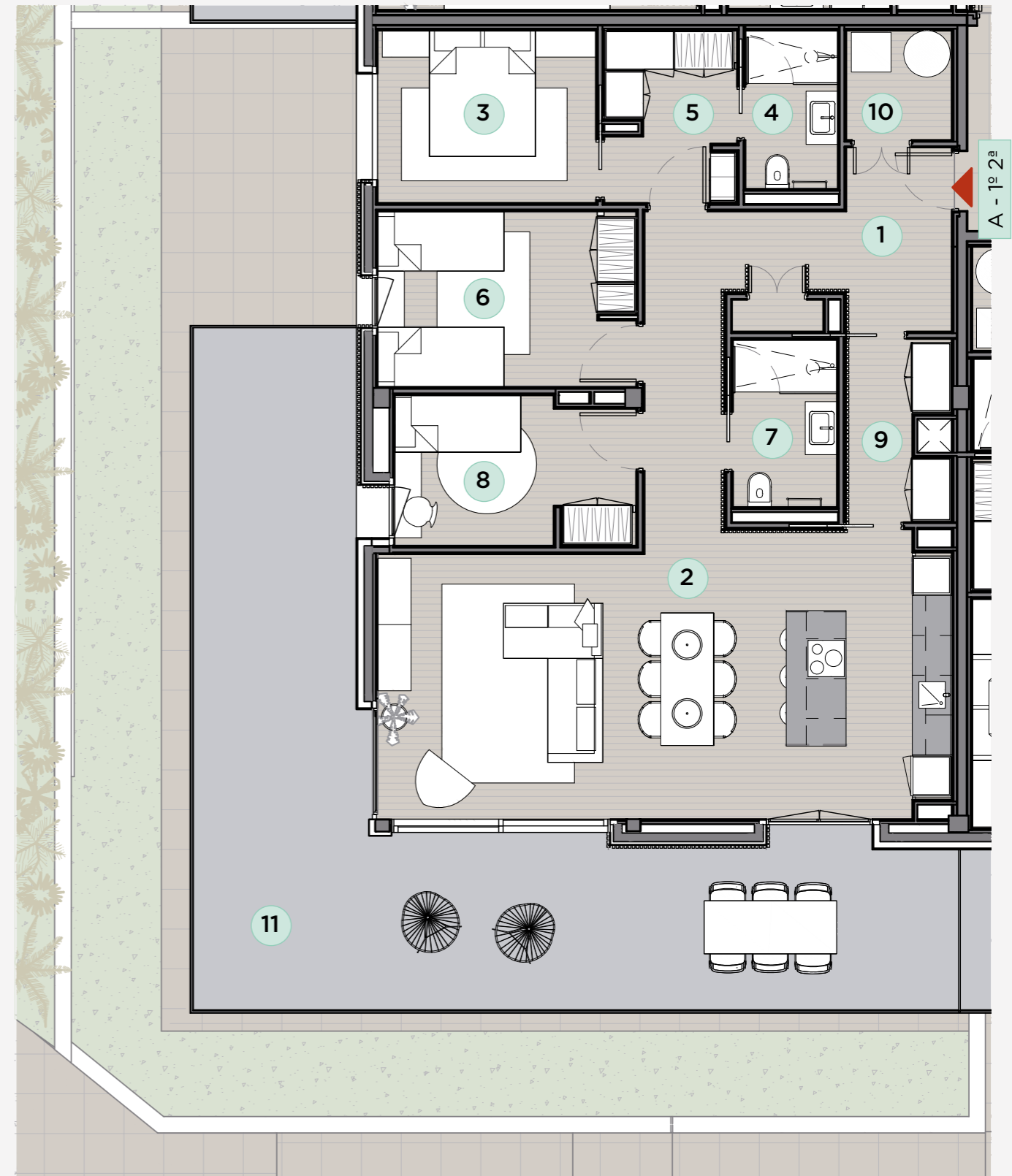
SPECIAL FEATURES

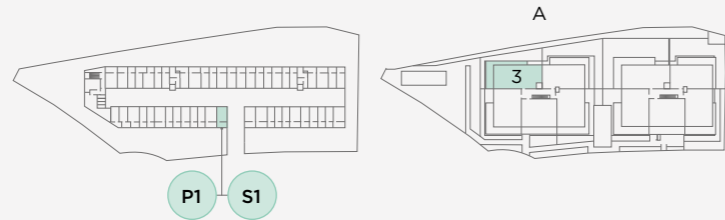
FIRST FLOOR 2

95.10 m ²	AREA
47.30 m ²	BALCONY
20.75 m ²	PARKING AND STORAGE SPACE
31.70 m ²	BEDROOMS AND DRESSING ROOMS
7.35 m ²	BATHROOMS
1	LIFT
1	COMMUNITY POOL
1	CHILL OUT ROOFTOP

SURFACES

INDOOR	
1	DISTRIBUTOR-ENTRANCE 13.70 m ²
2	KITCHEN-DINING-LIVING ROOM 35.60 m ²
3	BEDROOM 1 8.55 m ²
4	BATHROOM 2 3.35 m ²
5	DRESSING ROOM 1 5.00 m ²
6	BEDROOM 2 10.25 m ²
7	BATHROOM 1 4.00 m ²
8	BEDROOM 3 7.90 m ²
9	PANTRY 4.05 m ²
10	LAUNDRY 2.65 m ²
OUTDOOR	
11	BALCONY 47.30 m ²





BLOCK A

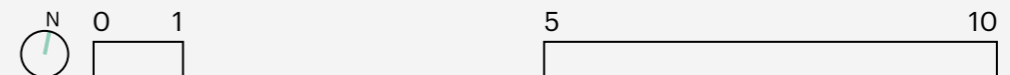
SPECIAL FEATURES

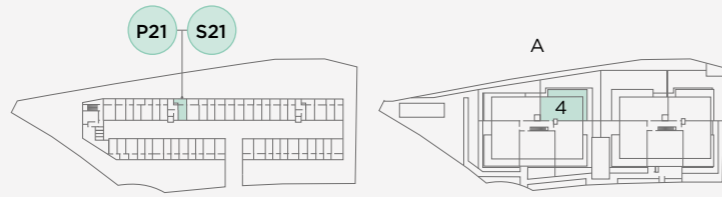
FIRST FLOOR 3

100.10 m ²	AREA
35.30 m ²	BALCONY
21.20 m ²	PARKING AND STORAGE SPACE
42.40 m ²	BEDROOMS AND DRESSING ROOMS
8.55 m ²	BATHROOMS
1	LIFT
1	COMMUNITY POOL
1	CHILL OUT ROOFTOP

SURFACES

INDOOR	
1	DISTRIBUTOR-ENTRANCE 10.55 m ²
2	KITCHEN-DINING-LIVING ROOM 37.85 m ²
3	BEDROOM 1 9.15 m ²
4	BATHROOM 2 2.70 m ²
5	DRESSING ROOM 1 6.70 m ²
6	BEDROOM 2 10.05 m ²
7	BATHROOM 1 4.40 m ²
8	BEDROOM 3 7.90 m ²
9	BEDROOM 4 8.60 m ²
10	TOILET 1.45 m ²
11	PANTRY 0.75 m ²
OUTDOOR	
12	BALCONY 35.30 m ²





BLOCK A

SPECIAL FEATURES

FIRST FLOOR 4

89.75 m ²	AREA
41.11 m ²	BALCONY
20.45 m ²	PARKING AND STORAGE SPACE
33.55 m ²	BEDROOMS AND DRESSING ROOMS
7.95 m ²	BATHROOMS
1	LIFT
1	COMMUNITY POOL
1	CHILL OUT ROOFTOP

SURFACES

INDOOR

1	DISTRIBUTOR-ENTRANCE	9.95 m ²
2	KITCHEN-DINING-LIVING ROOM	36.75 m ²
3	BEDROOM 1	9.20 m ²
4	BATHROOM 2	3.00 m ²
5	DRESSING ROOM 1	4.55 m ²
6	BEDROOM 2	9.60 m ²
7	BATHROOM 1	4.95 m ²
8	BEDROOM 3	10.20 m ²
9	LAUNDRY	1.55 m ²

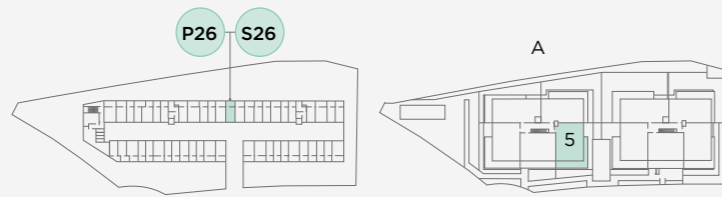
OUTDOOR

10	BALCONY	41.11 m ²
----	---------	----------------------



A - 1^o 4^a





BLOCK A

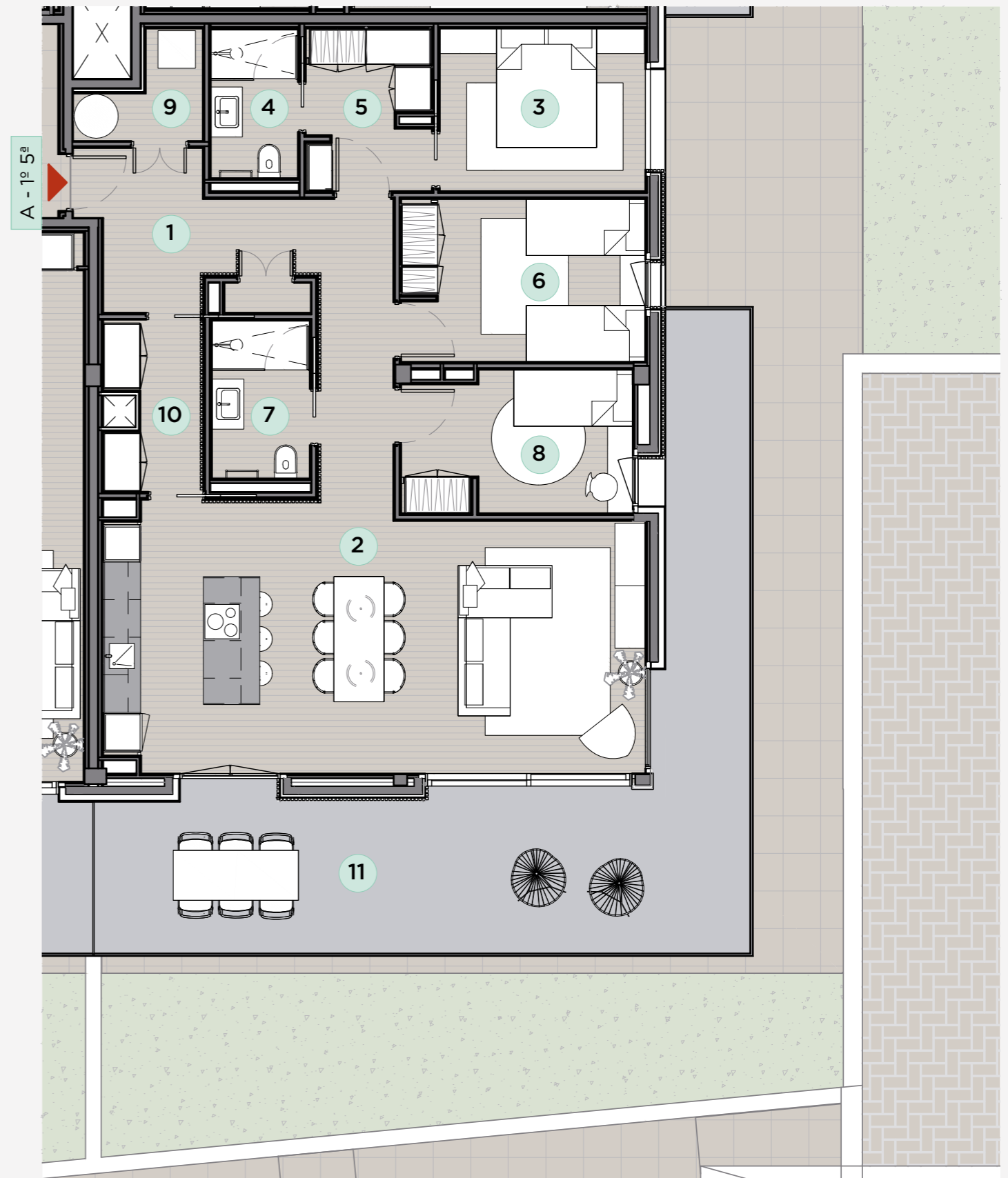
SPECIAL FEATURES

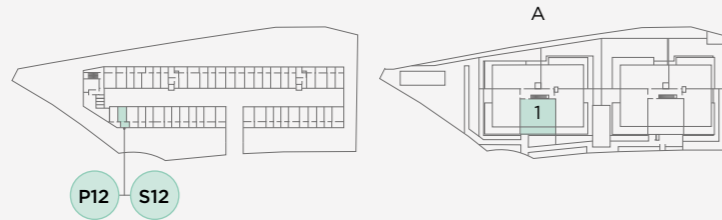
FIRST FLOOR 5

95.20 m ²	AREA
38.80 m ²	BALCONY
20.65 m ²	PARKING AND STORAGE SPACE
31.75 m ²	BEDROOMS AND DRESSING ROOMS
7.25 m ²	BATHROOMS
1	LIFT
1	COMMUNITY POOL
1	CHILL OUT ROOFTOP

SURFACES

INDOOR	
1	DISTRIBUTOR-ENTRANCE 14.00 m ²
2	KITCHEN-DINING-LIVING ROOM 35.70 m ²
3	BEDROOM 1 8.55 m ²
4	BATHROOM 2 3.30 m ²
5	DRESSING ROOM 1 5.00 m ²
6	BEDROOM 2 10.10 m ²
7	BATHROOM 1 3.95 m ²
8	BEDROOM 3 8.10 m ²
9	LAUNDRY 2.50 m ²
10	PANTRY 4.00 m ²
OUTDOOR	
11	BALCONY 38.80 m ²





BLOCK A

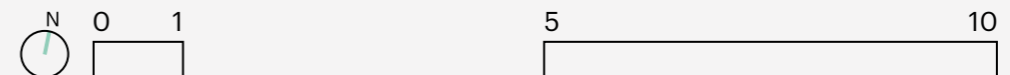
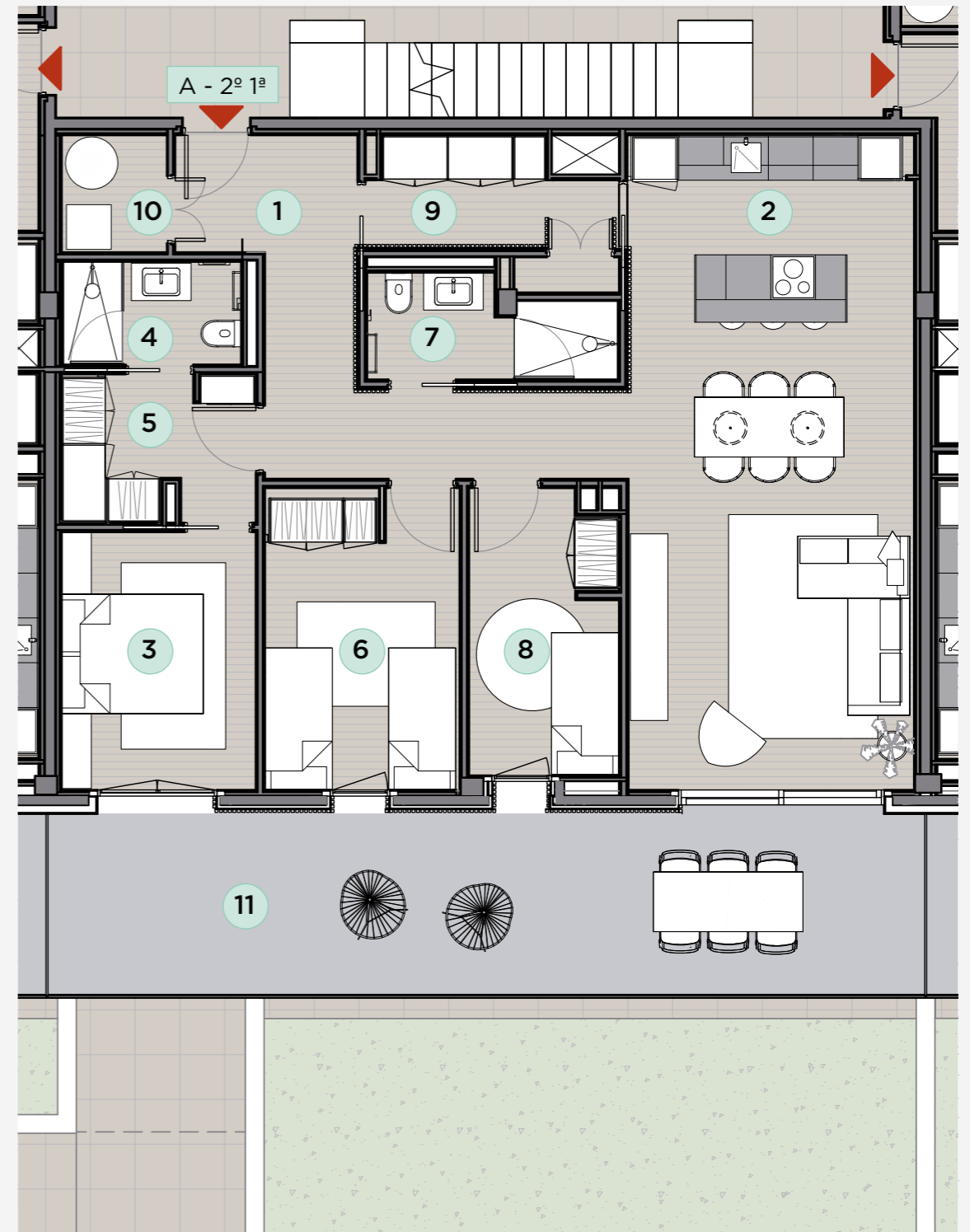
SPECIAL FEATURES

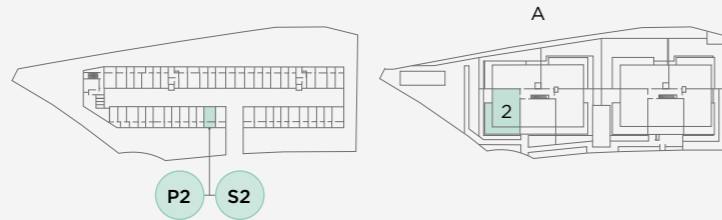
SECOND FLOOR 1

92.00 m ²	AREA
30.45 m ²	BALCONY
18.90 m ²	PARKING AND STORAGE SPACE
31.85 m ²	BEDROOMS AND DRESSING ROOMS
7.20 m ²	BATHROOMS
1	LIFT
1	COMMUNITY POOL
1	CHILL OUT ROOFTOP

SURFACES

INDOOR	
1 DISTRIBUTOR-ENTRANCE	11.90 m ²
2 KITCHEN-DINING-LIVING ROOM	33.60 m ²
3 BEDROOM 1	9.00 m ²
4 BATHROOM 2	3.30 m ²
5 DRESSING ROOM 1	4.95 m ²
6 BEDROOM 2	10.45 m ²
7 BATHROOM 1	3.90 m ²
8 BEDROOM 3	7.45 m ²
9 PANTRY	5.25 m ²
10 LAUNDRY	2.20 m ²
OUTDOOR	
11 BALCONY	30.45 m ²





BLOCK A

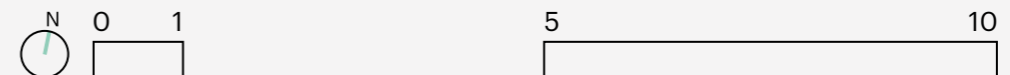
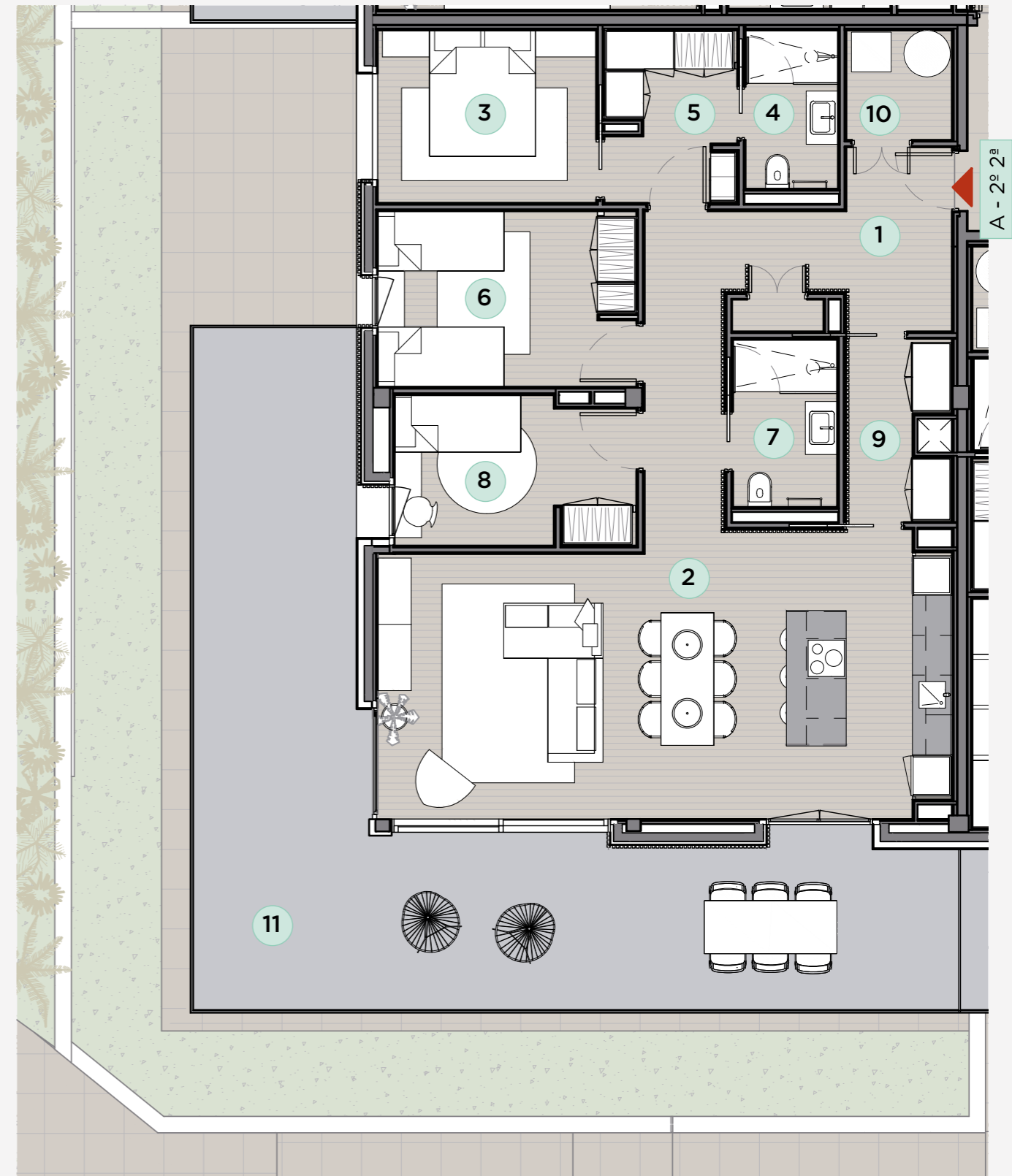
SPECIAL FEATURES

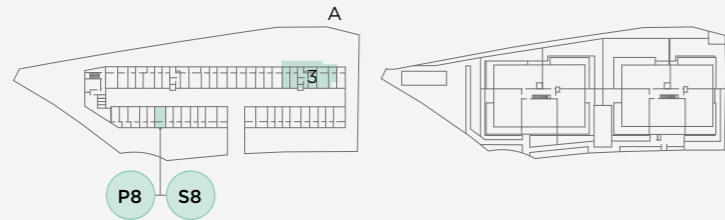
SECOND FLOOR 2

- 95.10 m² AREA
- 47.30 m² BALCONY
- 24.90 m² PARKING AND STORAGE SPACE
- 31.70 m² BEDROOMS AND DRESSING ROOMS
- 7.35 m² BATHROOMS
- 1 LIFT
- 1 COMMUNITY POOL
- 1 CHILL OUT ROOFTOP

SURFACES

INDOOR	
1 DISTRIBUTOR-ENTRANCE	13.70 m ²
2 KITCHEN-DINING-LIVING ROOM	35.60 m ²
3 BEDROOM 1	8.55 m ²
4 BATHROOM 2	3.35 m ²
5 DRESSING ROOM 1	5.00 m ²
6 BEDROOM 2	10.25 m ²
7 BATHROOM 1	4.00 m ²
8 BEDROOM 3	7.90 m ²
9 PANTRY	4.05 m ²
10 LAUNDRY	2.65 m ²
OUTDOOR	
11 BALCONY	47.30 m ²





BLOCK A

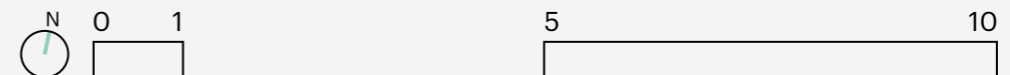
SPECIAL FEATURES

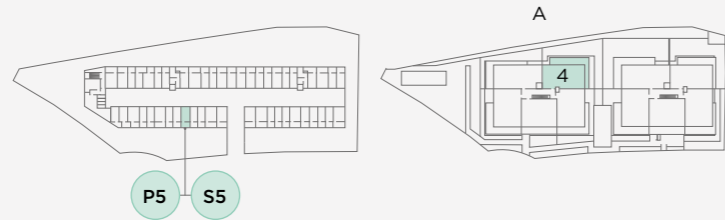
SECOND FLOOR 3

100.10 m ²	AREA
35.30 m ²	BALCONY
24.20 m ²	PARKING AND STORAGE SPACE
42.40 m ²	BEDROOMS AND DRESSING ROOMS
8.55 m ²	BATHROOMS
1	LIFT
1	COMMUNITY POOL
1	CHILL OUT ROOFTOP

SURFACES

INDOOR	
1	DISTRIBUTOR-ENTRANCE 10.55 m ²
2	KITCHEN-DINING-LIVING ROOM 37.85 m ²
3	BEDROOM 1 9.15 m ²
4	BATHROOM 2 2.70 m ²
5	DRESSING ROOM 1 6.70 m ²
6	BEDROOM 2 10.05 m ²
7	BATHROOM 1 4.40 m ²
8	BEDROOM 3 7.90 m ²
9	BEDROOM 4 8.60 m ²
10	TOILET 1.45 m ²
11	LAUNDRY 0.75 m ²
OUTDOOR	
12	BALCONY 35.30 m ²





BLOCK A

SPECIAL FEATURES

SECOND FLOOR 4

89.75 m ²	AREA
41.11 m ²	BALCONY
19.55 m ²	PARKING AND STORAGE SPACE
33.55 m ²	BEDROOMS AND DRESSING ROOMS
7.95 m ²	BATHROOMS
1	LIFT
1	COMMUNITY POOL
1	CHILL OUT ROOFTOP

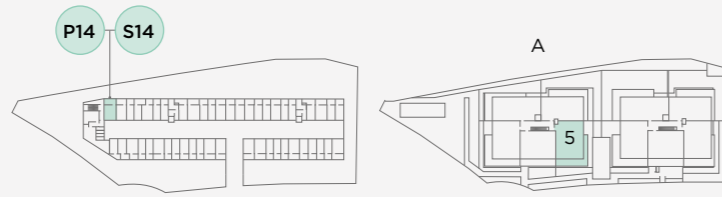
SURFACES

INDOOR	
1	DISTRIBUTOR-ENTRANCE 9.95 m ²
2	KITCHEN-DINING-LIVING ROOM 36.75 m ²
3	BEDROOM 1 9.20 m ²
4	BATHROOM 2 3.00 m ²
5	DRESSING ROOM 1 4.55 m ²
6	BEDROOM 2 9.60 m ²
7	BATHROOM 1 4.95 m ²
8	BEDROOM 3 10.20 m ²
9	LAUNDRY 1.55 m ²
OUTDOOR	
10	BALCONY 41.11 m ²



A - 2^o 4^a





BLOCK A

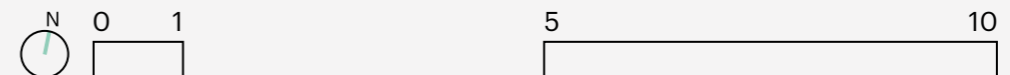
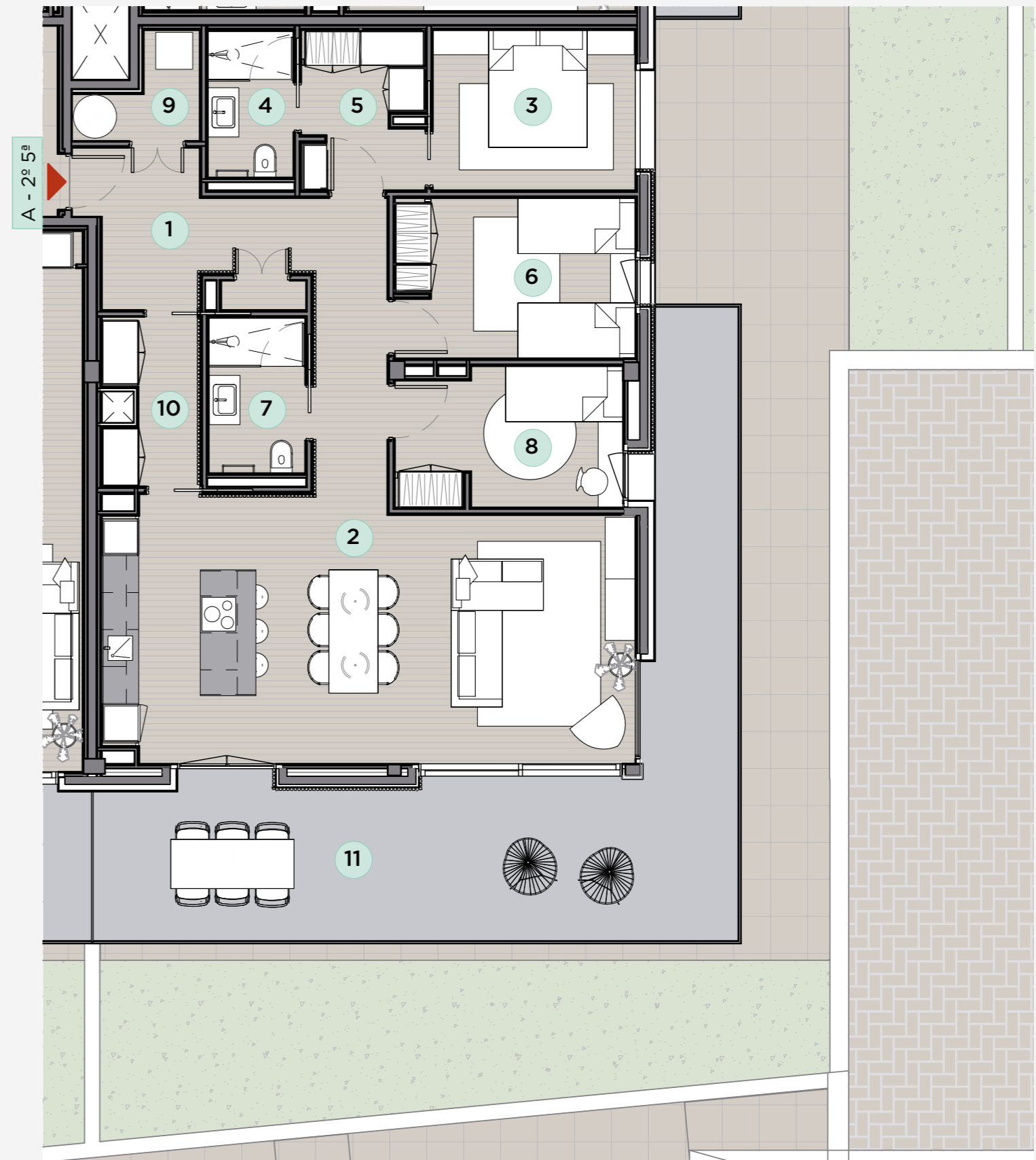
SPECIAL FEATURES

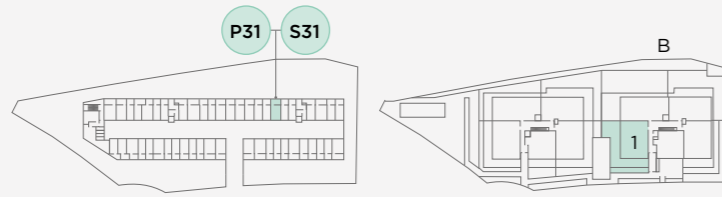
SECOND FLOOR 5

95.20 m ²	AREA
38.80 m ²	BALCONY
25.95 m ²	PARKING AND STORAGE SPACE
31.75 m ²	BEDROOMS AND DRESSING ROOMS
7.25 m ²	BATHROOMS
1	LIFT
1	COMMUNITY POOL
1	CHILL OUT ROOFTOP

SURFACES

INDOOR	
1	DISTRIBUTOR-ENTRANCE 14.00 m ²
2	KITCHEN-DINING-LIVING ROOM 35.70 m ²
3	BEDROOM 1 8.55 m ²
4	BATHROOM 2 3.30 m ²
5	DRESSING ROOM 1 5.00 m ²
6	BEDROOM 2 10.10 m ²
7	BATHROOM 1 3.95 m ²
8	BEDROOM 3 8.10 m ²
9	LAUNDRY 2.50 m ²
10	PANTRY 4.00 m ²
OUTDOOR	
11	BALCONY 38.80 m ²





BLOCK B

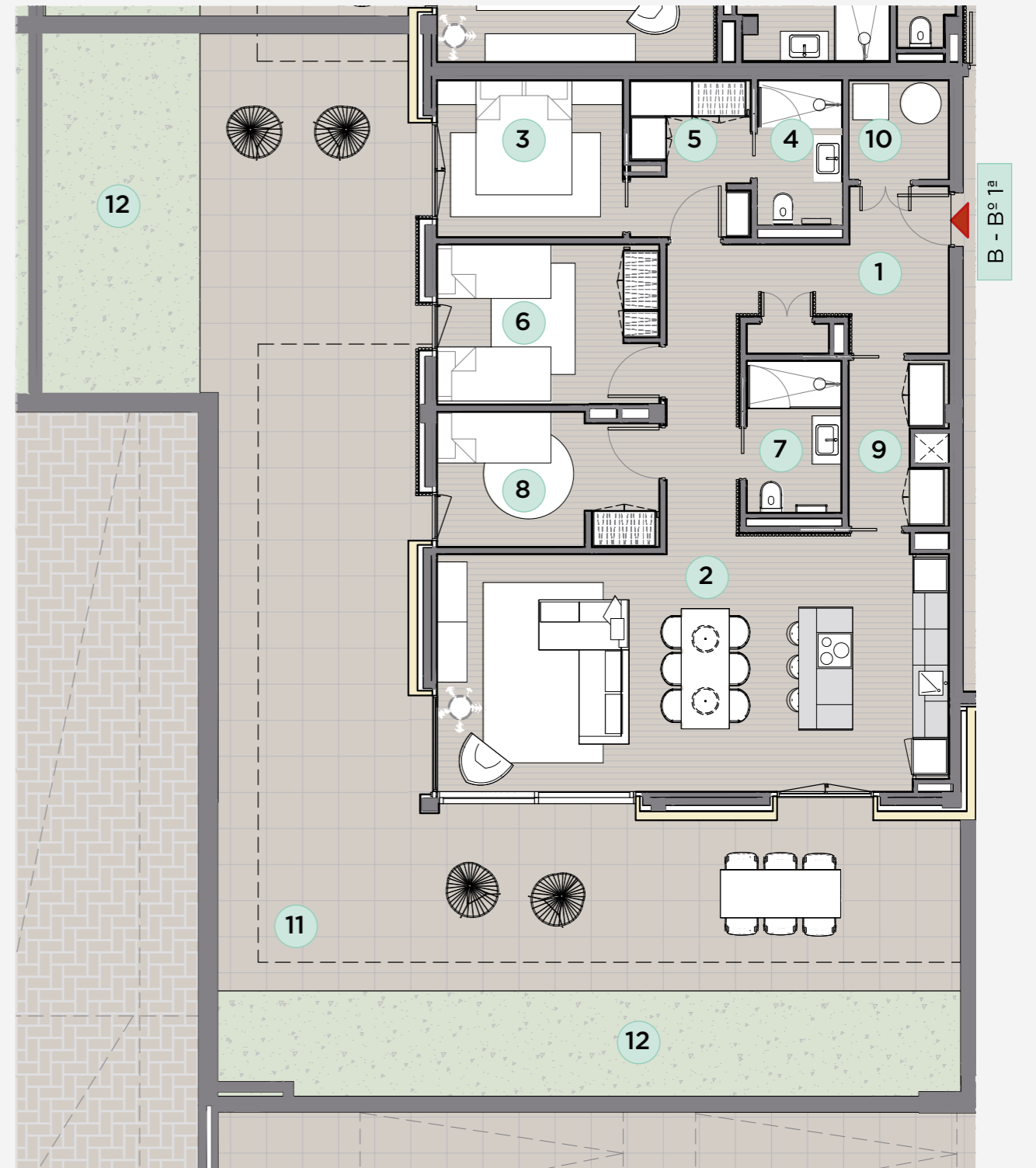
SPECIAL FEATURES

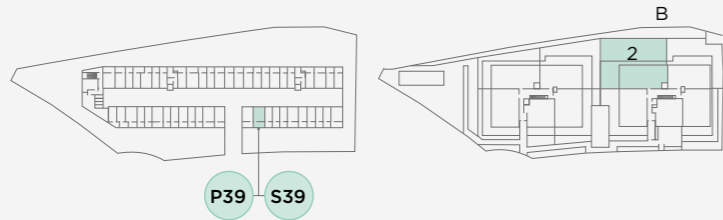
GROUND FLOOR 1

93.00 m ²	AREA
20.64 m ²	GARDEN
86.40 m ²	TERRACE
22.40 m ²	PARKING AND STORAGE SPACE
30.80 m ²	BEDROOMS AND DRESSING ROOMS
7.35 m ²	BATHROOMS
1	LIFT
1	COMMUNITY POOL
1	CHILL OUT ROOFTOP

SURFACES

INDOOR	
1	DISTRIBUTOR-ENTRANCE 13.85 m ²
2	KITCHEN-DINING-LIVING ROOM 34.10 m ²
3	BEDROOM 1 8.05 m ²
4	BATHROOM 2 3.35 m ²
5	DRESSING ROOM 1 5.00 m ²
6	BEDROOM 2 9.75 m ²
7	BATHROOM 1 4.00 m ²
8	BEDROOM 3 8.00 m ²
9	PANTRY 4.15 m ²
10	LAUNDRY 2.75 m ²
OUTDOOR	
11	TERRACE 86.40 m ²
12	GARDEN 20.64 m ²





BLOCK B

SPECIAL FEATURES

GROUND FLOOR 2

96.70 m ²	AREA
159.00 m ²	GARDEN
78.00 m ²	TERRACE
25.20 m ²	PARKING AND STORAGE SPACE
33.50 m ²	BEDROOMS AND DRESSING ROOMS
8.55 m ²	BATHROOMS
1	LIFT
1	COMMUNITY POOL
1	CHILL OUT ROOFTOP

SURFACES

INDOOR

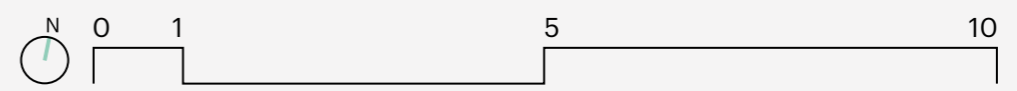
1 DISTRIBUTOR-ENTRANCE	10.55 m ²
2 KITCHEN-DINING-LIVING ROOM	35.45 m ²
3 BEDROOM 1	8.60 m ²
4 BATHROOM 1	4.40 m ²
5 DRESSING ROOM 4	6.70 m ²
6 BEDROOM 2	7.85 m ²
7 BATHROOM 2	2.70 m ²
8 BEDROOM 3	9.55 m ²
9 BEDROOM 4	8.70 m ²
10 LAUNDRY	0.75 m ²
11 TOILET	1.45 m ²

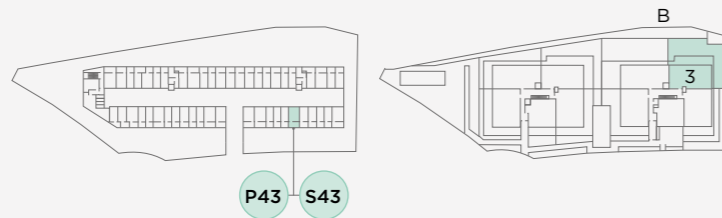
OUTDOOR

12 TERRACE	78.00 m ²
13 GARDEN	159.00 m ²



B - B^o 2^a





BLOCK B

SPECIAL FEATURES

GROUND FLOOR 3

86.65 m ²	AREA
130.00 m ²	GARDEN
45.00 m ²	TERRACE
24.50 m ²	PARKING AND STORAGE SPACE
32.90 m ²	BEDROOMS AND DRESSING ROOMS
7.85 m ²	BATHROOMS
1	LIFT
1	COMMUNITY POOL
1	CHILL OUT ROOFTOP

SURFACES

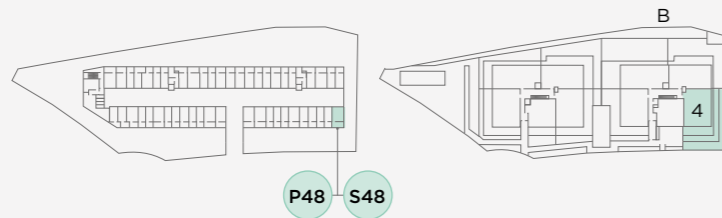
INDOOR

1 DISTRIBUTOR-ENTRANCE	9.95 m ²
2 KITCHEN-DINING-LIVING ROOM	34.40 m ²
3 BEDROOM 1	8.65 m ²
4 BATHROOM 2	2.90 m ²
5 DRESSING ROOM 1	4.55 m ²
6 BEDROOM 2	9.55 m ²
7 BATHROOM 1	4.95 m ²
8 BEDROOM 3	10.15 m ²
9 LAUNDRY	1.55 m ²

OUTDOOR

10 TERRACE	45.00 m ²
11 GARDEN	130.00 m ²





BLOCK B

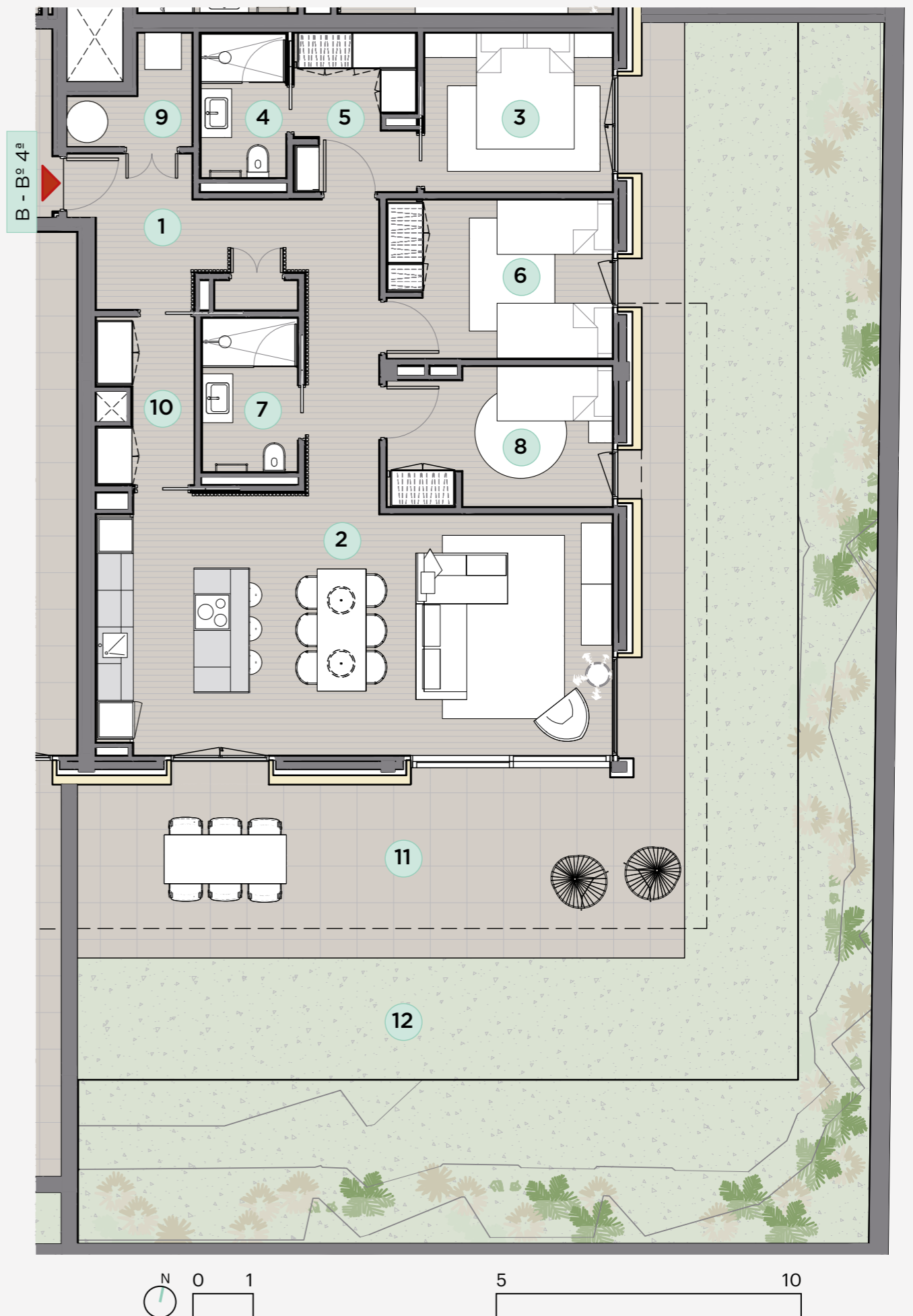
SPECIAL FEATURES

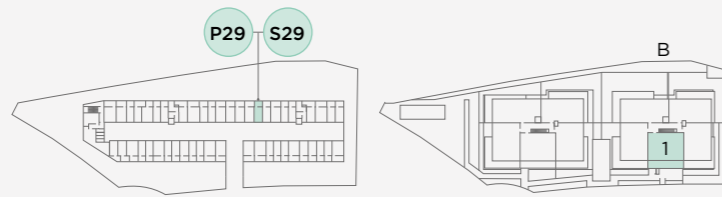
GROUND FLOOR 4

92.70 m ²	AREA
116.00 m ²	GARDEN
37.00 m ²	TERRACE
25.50 m ²	PARKING AND STORAGE SPACE
30.70 m ²	BEDROOMS AND DRESSING ROOMS
7.25 m ²	BATHROOMS
1	LIFT
1	COMMUNITY POOL
1	CHILL OUT ROOFTOP

SURFACES

INDOOR	
1 DISTRIBUTOR-ENTRANCE	13.90 m ²
2 KITCHEN-DINING-LIVING ROOM	34.15 m ²
3 BEDROOM 1	8.00 m ²
4 BATHROOM 2	3.30 m ²
5 DRESSING ROOM 1	5.00 m ²
6 BEDROOM 2	9.55 m ²
7 BATHROOM 1	3.95 m ²
8 BEDROOM 3	8.15 m ²
9 LAUNDRY	2.65 m ²
10 PANTRY	4.05 m ²
OUTDOOR	
11 TERRACE	37.00 m ²
12 GARDEN	116.00 m ²





BLOCK B

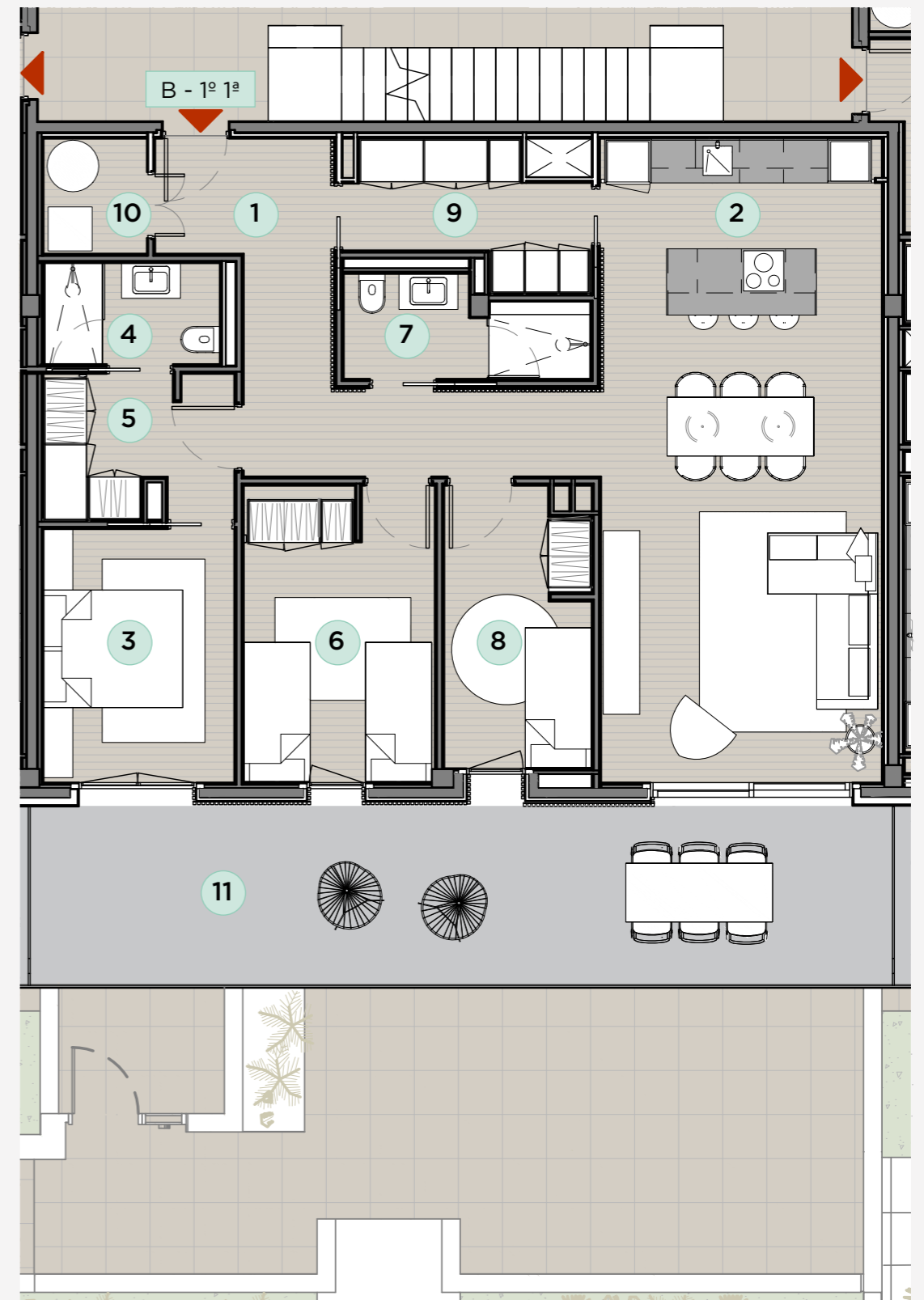
SPECIAL FEATURES

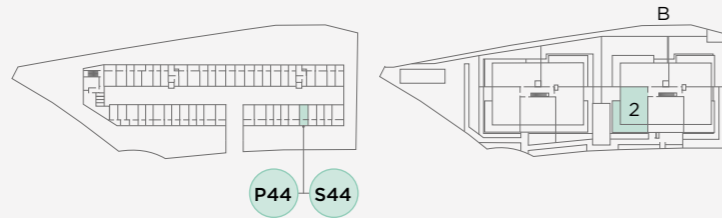
FIRST FLOOR 1

92.00 m ²	AREA
30.45 m ²	BALCONY
17.70 m ²	PARKING AND STORAGE SPACE
31.85 m ²	BEDROOMS AND DRESSING ROOMS
7.20 m ²	BATHROOMS
1	LIFT
1	COMMUNITY POOL
1	CHILL OUT ROOFTOP

SURFACES

INDOOR	
1	DISTRIBUTOR-ENTRANCE 11.90 m ²
2	KITCHEN-DINING-LIVING ROOM 33.60 m ²
3	BEDROOM 1 9.00 m ²
4	BATHROOM 2 3.30 m ²
5	DRESSING ROOM 1 4.95 m ²
6	BEDROOM 2 10.45 m ²
7	BATHROOM 1 3.90 m ²
8	BEDROOM 3 7.45 m ²
9	PANTRY 5.25 m ²
10	LAUNDRY 2.20 m ²
OUTDOOR	
11	BALCONY 30.45 m ²





BLOCK B

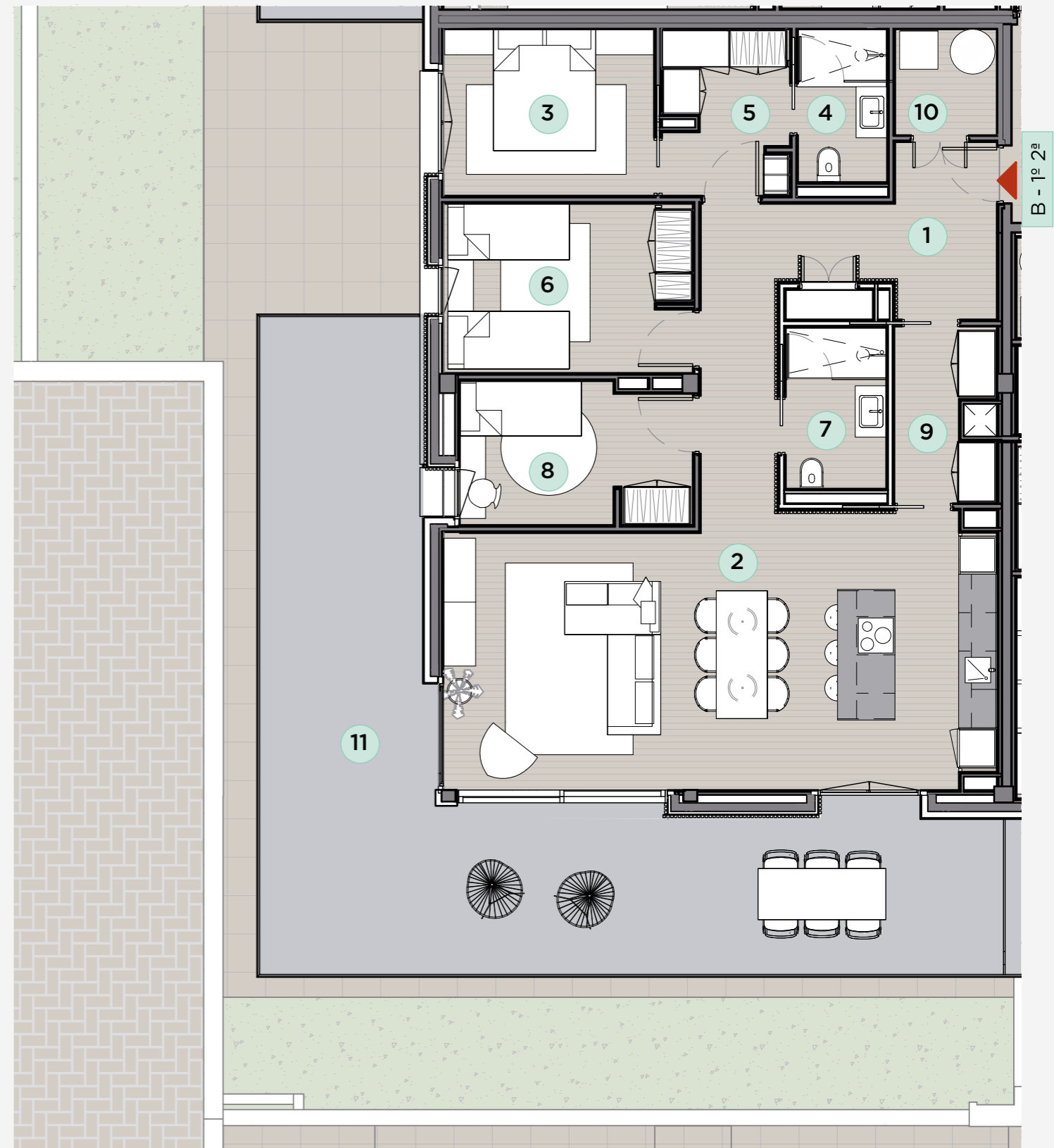
SPECIAL FEATURES

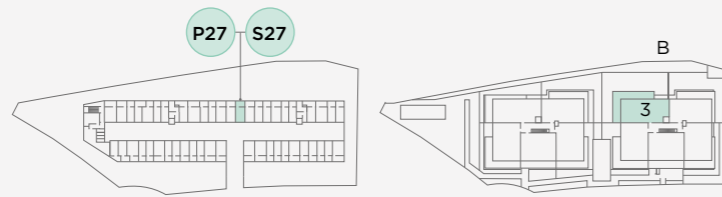
FIRST FLOOR 2

95.10 m ²	AREA
47.30 m ²	BALCONY
18.65 m ²	PARKING AND STORAGE SPACE
31.70 m ²	BEDROOMS AND DRESSING ROOMS
7.35 m ²	BATHROOMS
1	LIFT
1	COMMUNITY POOL
1	CHILL OUT ROOFTOP

SURFACES

INDOOR	
1	DISTRIBUTOR-ENTRANCE 13.70 m ²
2	KITCHEN-DINING-LIVING ROOM 35.60 m ²
3	BEDROOM 1 8.55 m ²
4	BATHROOM 1 3.35 m ²
5	DRESSING ROOM 1 5.00 m ²
6	BEDROOM 2 10.25 m ²
7	BATHROOM 2 4.00 m ²
8	BEDROOM 3 7.90 m ²
9	PANTRY 4.05 m ²
10	LAUNDRY 2.65 m ²
OUTDOOR	
11	BALCONY 47.30 m ²





BLOCK B

SPECIAL FEATURES

FIRST FLOOR 3

100.10 m ²	AREA
52.14 m ²	BALCONY
20.70 m ²	PARKING AND STORAGE SPACE
42.40 m ²	BEDROOMS AND DRESSING ROOMS
8.55 m ²	BATHROOMS
1	LIFT
1	COMMUNITY POOL
1	CHILL OUT ROOFTOP

SURFACES

INDOOR

1 DISTRIBUTOR-ENTRANCE	10.55 m ²
2 KITCHEN-DINING-LIVING ROOM	37.85 m ²
3 BEDROOM 1	8.15 m ²
4 BATHROOM 2	2.70 m ²
5 DRESSING ROOM 1	6.70 m ²
6 BEDROOM 2	10.05 m ²
7 BATHROOM 1	4.40 m ²
8 BEDROOM 3	7.90 m ²
9 BEDROOM 4	8.60 m ²
10 TOILET	1.45 m ²
11 PANTRY	0.75 m ²

OUTDOOR

12 BALCONY	52.14 m ²
------------	----------------------





BLOCK B

SPECIAL FEATURES

FIRST FLOOR 4

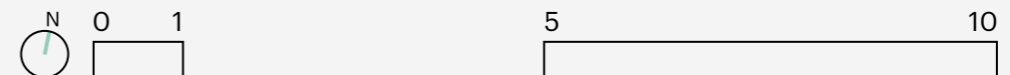
89.75 m ²	AREA
37.28 m ²	BALCONY
17.70 m ²	PARKING AND STORAGE SPACE
33.55 m ²	BEDROOMS AND DRESSING ROOMS
7.95 m ²	BATHROOMS
1	LIFT
1	COMMUNITY POOL
1	CHILL OUT ROOFTOP

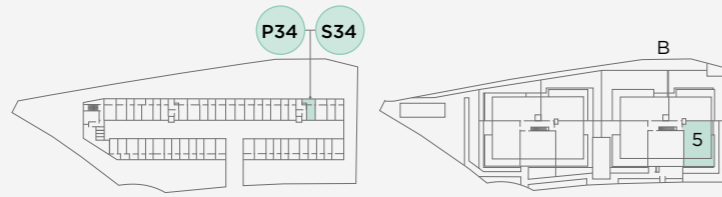
SURFACES

INDOOR	
1 DISTRIBUTOR-ENTRANCE	9.95 m ²
2 KITCHEN-DINING-LIVING ROOM	36.75 m ²
3 BEDROOM 1	9.20 m ²
4 BATHROOM 2	3.00 m ²
5 DRESSING ROOM 1	4.55 m ²
6 BEDROOM 2	9.60 m ²
7 BATHROOM 1	4.95 m ²
8 BEDROOM 3	10.20 m ²
9 LAUNDRY	1.55 m ²
OUTDOOR	
10 BALCONY	37.28 m ²



B - 1^o 4^a





BLOCK B

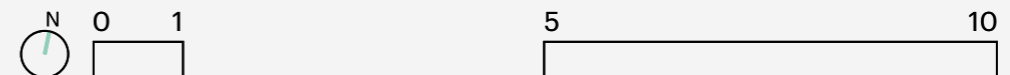
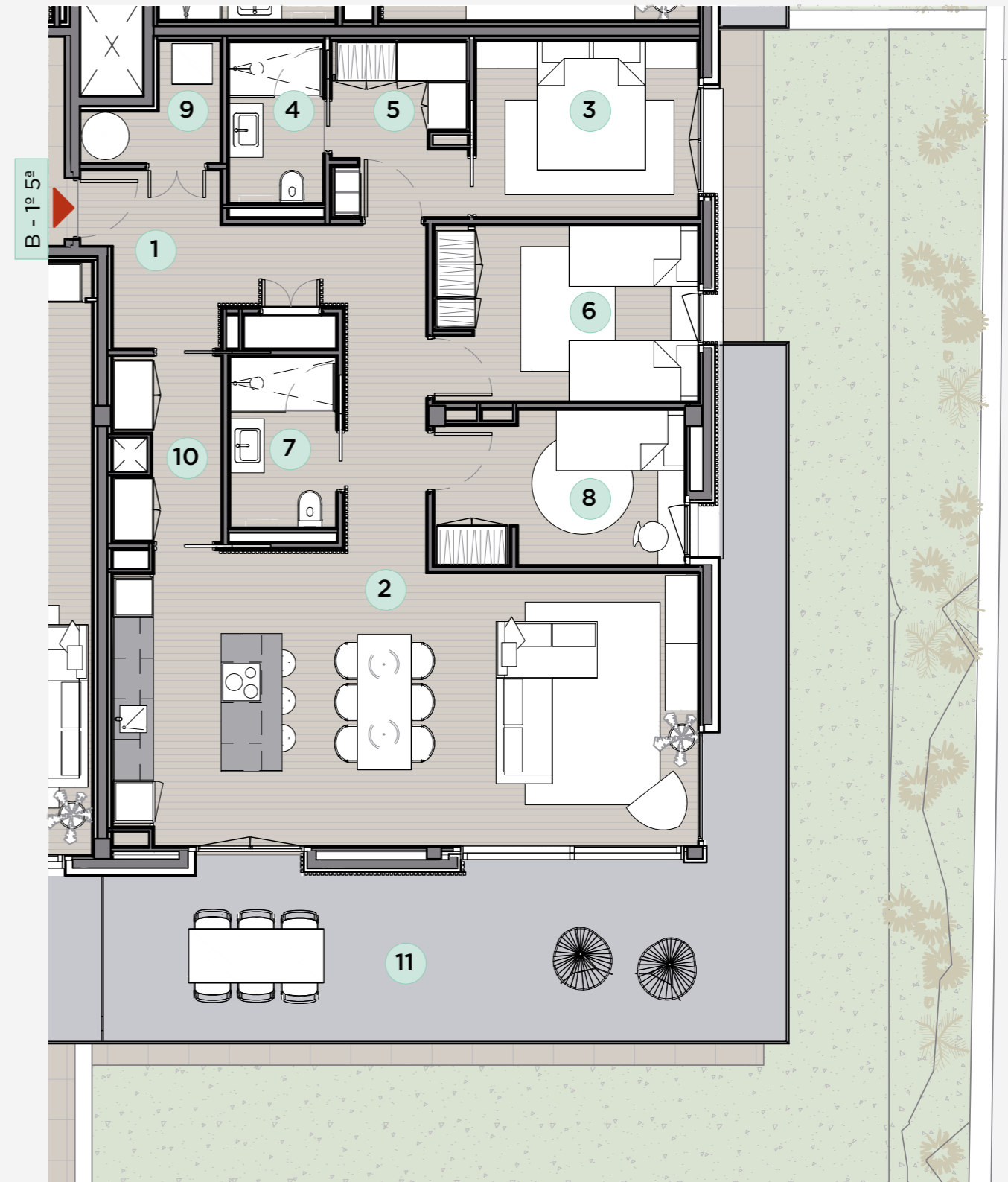
SPECIAL FEATURES

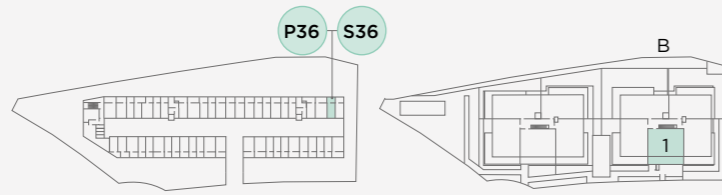
FIRST FLOOR 5

95.20 m ²	AREA
32.16 m ²	BALCONY
20.20 m ²	PARKING AND STORAGE SPACE
31.75 m ²	BEDROOMS AND DRESSING ROOMS
7.25 m ²	BATHROOMS
1	LIFT
1	COMMUNITY POOL
1	CHILL OUT ROOFTOP

SURFACES

INDOOR	
1	DISTRIBUTOR-ENTRANCE 14.00 m ²
2	KITCHEN-DINING-LIVING ROOM 35.70 m ²
3	BEDROOM 1 8.55 m ²
4	BATHROOM 2 3.30 m ²
5	DRESSING ROOM 1 5.00 m ²
6	BEDROOM 2 10.10 m ²
7	BATHROOM 1 3.95 m ²
8	BEDROOM 3 8.10 m ²
9	LAUNDRY 2.50 m ²
10	PANTRY 4.00 m ²
OUTDOOR	
11	BALCONY 32.16 m ²





BLOCK B

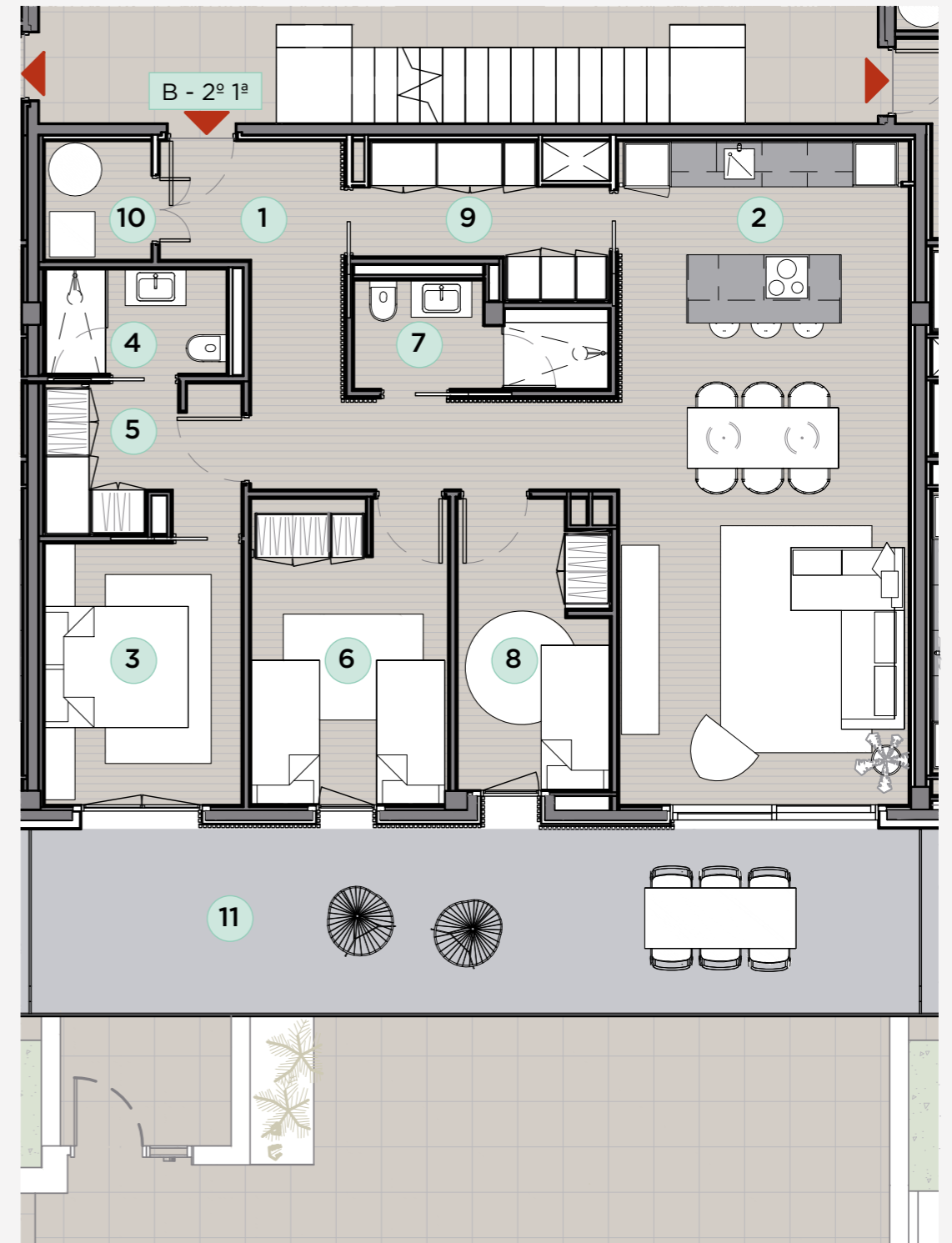
SPECIAL FEATURES

SECOND FLOOR 1

92.00 m ²	AREA
30.45 m ²	BALCONY
17.90 m ²	PARKING AND STORAGE SPACE
31.85 m ²	BEDROOMS AND DRESSING ROOMS
7.20 m ²	BATHROOMS
1	LIFT
1	COMMUNITY POOL
1	CHILL OUT ROOFTOP

SURFACES

INDOOR	
1	DISTRIBUTOR-ENTRANCE 11.90 m ²
2	KITCHEN-DINING-LIVING ROOM 33.60 m ²
3	BEDROOM 1 9.00 m ²
4	BATHROOM 2 3.30 m ²
5	DRESSING ROOM 1 4.95 m ²
6	BEDROOM 2 10.45 m ²
7	BATHROOM 1 3.90 m ²
8	BEDROOM 3 7.45 m ²
9	PANTRY 5.25 m ²
10	LAUNDRY 2.20 m ²
OUTDOOR	
11	BALCONY 30.45 m ²





BLOCK B

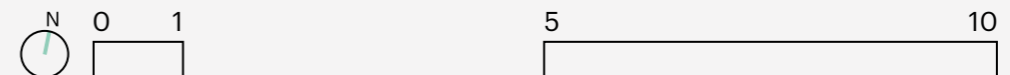
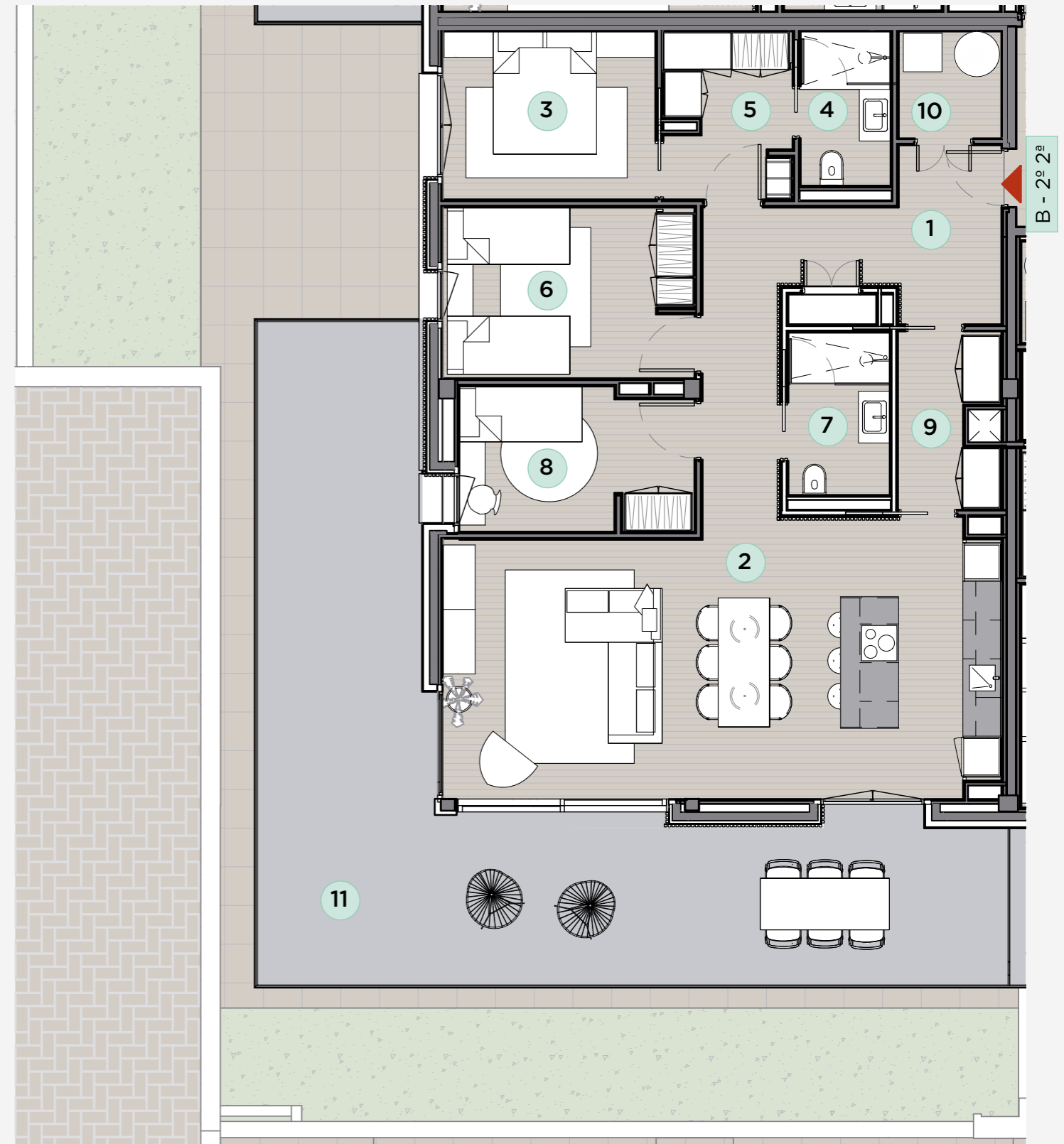
SPECIAL FEATURES

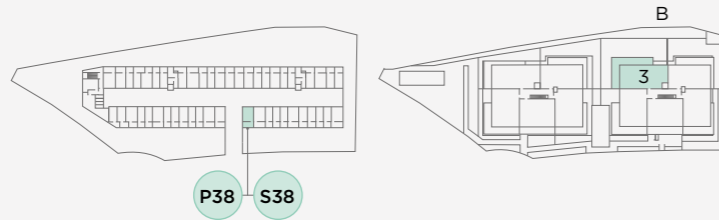
SECOND FLOOR 2

95.10 m ²	AREA
47.30 m ²	BALCONY
25.70 m ²	PARKING AND STORAGE SPACE
31.70 m ²	BEDROOMS AND DRESSING ROOMS
7.35 m ²	BATHROOMS
1	LIFT
1	COMMUNITY POOL
1	CHILL OUT ROOFTOP

SURFACES

INDOOR	
1	DISTRIBUTOR-ENTRANCE 13.70 m ²
2	KITCHEN-DINING-LIVING ROOM 35.60 m ²
3	BEDROOM 1 8.55 m ²
4	BATHROOM 2 3.35 m ²
5	DRESSING ROOM 1 5.00 m ²
6	BEDROOM 2 10.25 m ²
7	BATHROOM 1 4.00 m ²
8	BEDROOM 3 7.90 m ²
9	PANTRY 4.05 m ²
10	LAUNDRY 2.65 m ²
OUTDOOR	
11	BALCONY 47.30 m ²





BLOCK B

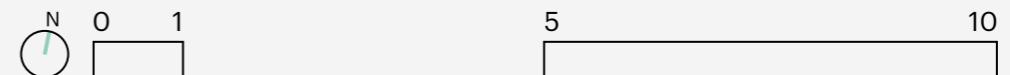
SPECIAL FEATURES

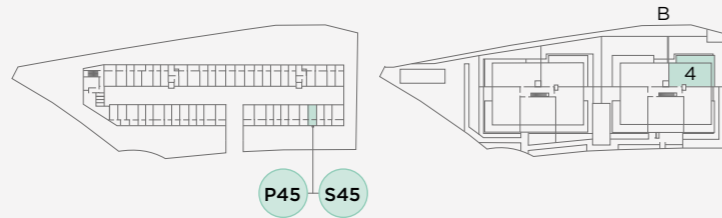
SECOND FLOOR 3

100.10 m ²	AREA
52.14 m ²	BALCONY
23.25 m ²	PARKING AND STORAGE SPACE
42.40 m ²	BEDROOMS AND DRESSING ROOMS
8.55 m ²	BATHROOMS
1	LIFT
1	COMMUNITY POOL
1	CHILL OUT ROOFTOP

SURFACES

INDOOR	
1	DISTRIBUTOR-ENTRANCE 10.55 m ²
2	KITCHEN-DINING-LIVING ROOM 37.85 m ²
3	BEDROOM 1 8.15 m ²
4	BATHROOM 2 2.70 m ²
5	DRESSING ROOM 1 6.70 m ²
6	BEDROOM 2 10.05 m ²
7	BATHROOM 1 4.40 m ²
8	BEDROOM 3 7.90 m ²
9	BEDROOM 4 8.60 m ²
10	TOILET 1.45 m ²
11	LAUNDRY 0.75 m ²
OUTDOOR	
12	BALCONY 52.14 m ²





BLOCK B

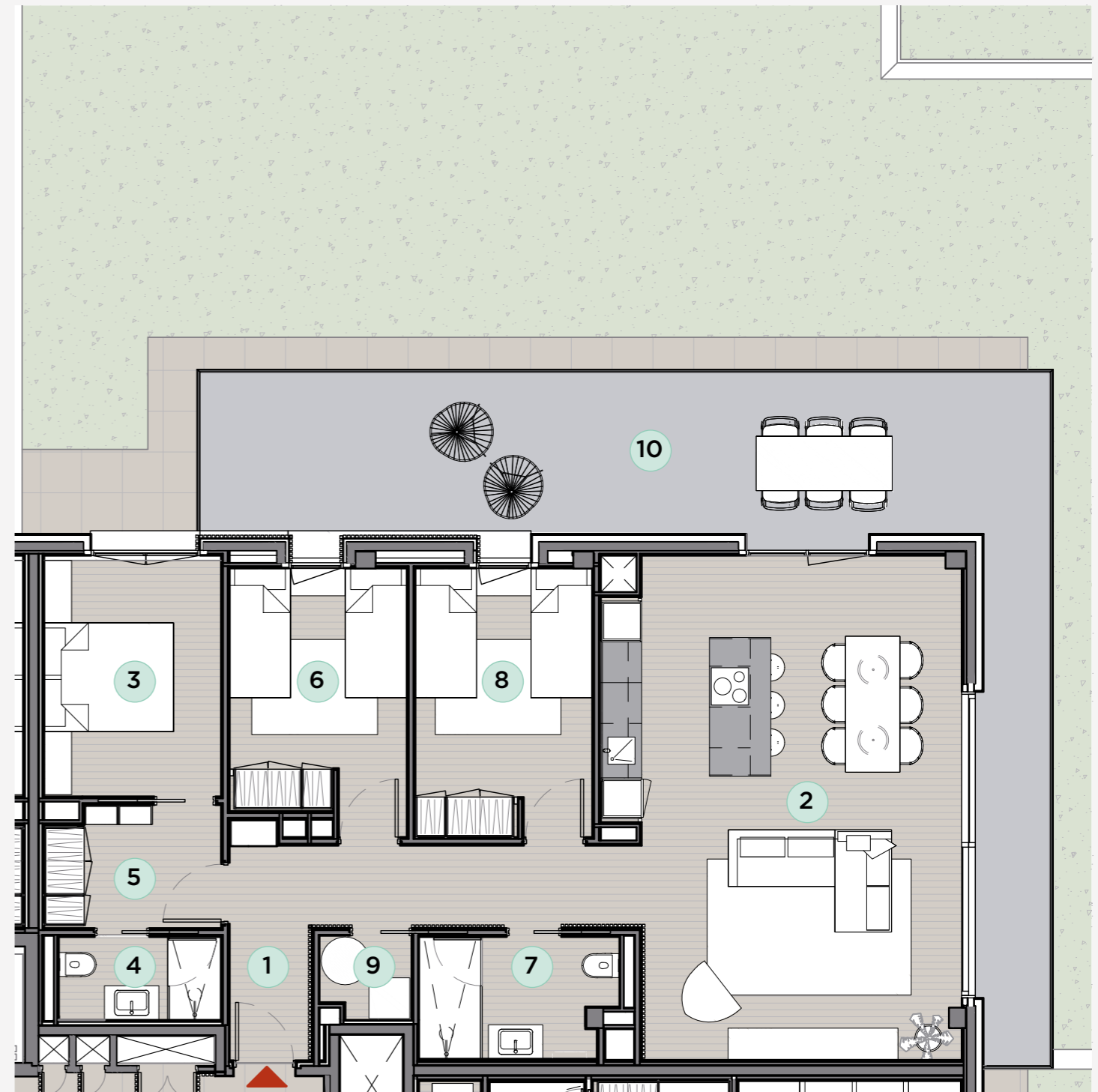
SPECIAL FEATURES

SECOND FLOOR 4

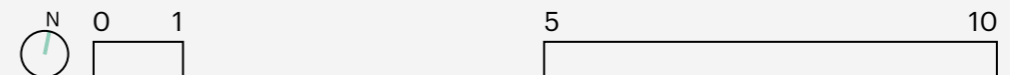
89.75 m ²	AREA
37.28 m ²	BALCONY
18.60 m ²	PARKING AND STORAGE SPACE
33.55 m ²	BEDROOMS AND DRESSING ROOMS
7.95 m ²	BATHROOMS
1	LIFT
1	COMMUNITY POOL
1	CHILL OUT ROOFTOP

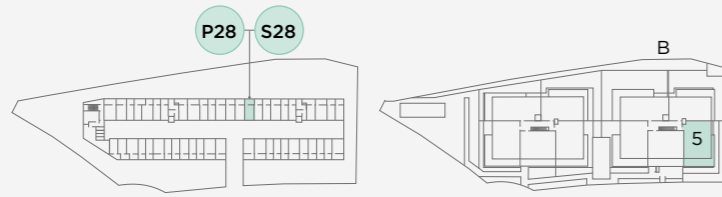
SURFACES

INDOOR	
1 DISTRIBUTOR-ENTRANCE	9.95 m ²
2 KITCHEN-DINING-LIVING ROOM	36.75 m ²
3 BEDROOM 1	9.20 m ²
4 BATHROOM 2	3.00 m ²
5 DRESSING ROOM 1	4.55 m ²
6 BEDROOM 2	9.60 m ²
7 BATHROOM 1	4.95 m ²
8 BEDROOM 3	10.20 m ²
9 LAUNDRY	1.55 m ²
OUTDOOR	
10 BALCONY	37.28 m ²



B - 2^o 4^a





BLOCK B

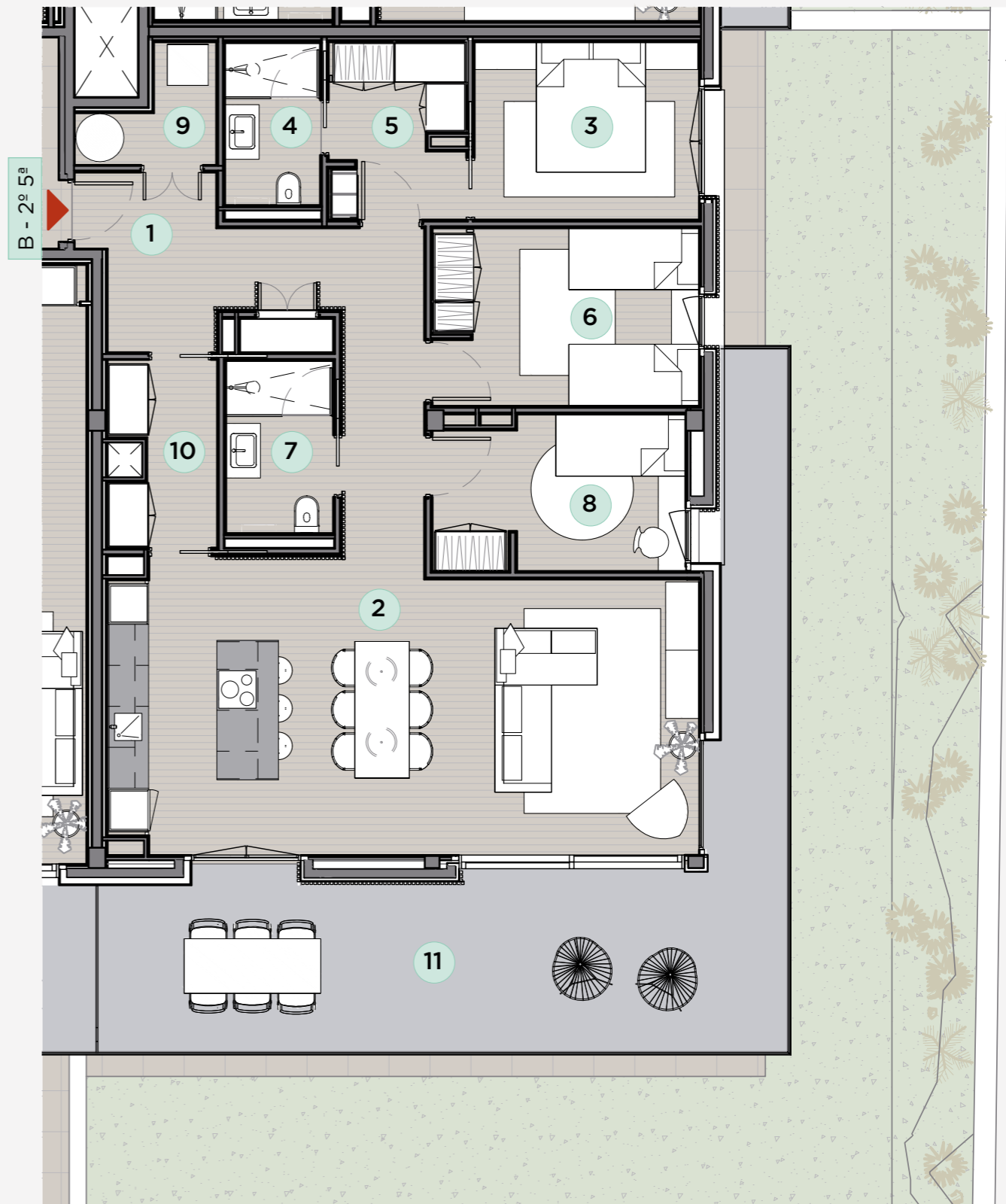
SPECIAL FEATURES

SECOND FLOOR 5

95.20 m ²	AREA
32.16 m ²	BALCONY
21.30 m ²	PARKING AND STORAGE SPACE
31.75 m ²	BEDROOMS AND DRESSING ROOMS
7.25 m ²	BATHROOMS
1	LIFT
1	COMMUNITY POOL
1	CHILL OUT ROOFTOP

SURFACES

INDOOR	
1	DISTRIBUTOR-ENTRANCE 14.00 m ²
2	KITCHEN-DINING-LIVING ROOM 35.70 m ²
3	BEDROOM 1 8.55 m ²
4	BATHROOM 2 3.30 m ²
5	DRESSING ROOM 1 5.00 m ²
6	BEDROOM 2 10.10 m ²
7	BATHROOM 1 3.95 m ²
8	BEDROOM 3 8.10 m ²
9	LAUNDRY 2.50 m ²
10	PANTRY 4.00 m ²
OUTDOOR	
11	BALCONY 32.16 m ²



*“Painting nature directly
it is not copying the objective
but to paint sensations”*

Paul Cézanne



Book your visit:
+34 659.838.868

The developer and the project management team reserve the right to make necessary modifications during the course of the construction due to technical, legal, or commercial requirements without compromising the quality level.

Images are non-contractual and merely illustrative, subject to modifications due to technical, legal, or commercial requirements from the project management team or competent authority. The renderings of facades, common areas, and other spaces are indicative and may be subject to changes or modifications in the technical projects. The furniture shown in the interior renderings is not included, and the housing equipment will be as indicated in the corresponding quality specifications.

Reserve su visita:
+34 659.838.868

La sociedad promotora y la dirección facultativa se reservan el derecho de efectuar, durante el transcurso de la ejecución de la obra, las modificaciones necesarias por exigencias de orden técnico, jurídico o comercial sin que ello implique menoscabo en el nivel de calidad.

Imágenes no contractuales y meramente ilustrativas sujetas a modificaciones por exigencias de orden técnico, jurídico o comercial de la dirección facultativa o autoridad competente. Las infografías de las fachadas, elementos comunes y restantes espacios son orientativas y podrán ser objeto de variación o modificación en los proyectos técnicos. El mobiliario de las infografías interiores no está incluido y el equipamiento de las viviendas será el indicado en la correspondiente memoria de calidades.

